



Wissahickon Valley

historical society

Ambler  
Lower Gwynedd  
Whitpain

Item Type  Object  Photograph  Document  Book

Collection Historical Society of

Object ID/Accession # 3000-84

Object Name photograph of Normandy

Category photography

Date/Year Range

Title colored photograph of Normandy Farm buildings

Creator/Author/Artist

Description:

matted/framed colored photograph of  
Normandy Farm barns





Wissahickon Valley

*historical society*

Ambler  
Lower Gwynedd  
Whitpain

Item Type  Object  Photograph  Document  Book

Collection Historical Society of

Object ID/Accession # 3000-85

Object Name reading glasses

Category tool

Date/Year Range

Title reading glasses

Creator/Author/Artist

Description:

metal with brass nose piece.





Item Type  Object  Photograph  Document  Book

Collection Historical Society of

Object ID/Accession # 3000-87

Object Name photo of Blue Bell Inn

Category photograph

Date/Year Range

Title Blue Bell Inn

Creator/Author/Artist

Description:

copy of black and white photograph p of in  
with people and horses in foreground  
in black wooden frame





Wissahickon Valley

*historical society*

Ambler  
Lower Gwynedd  
Whitpain

Item Type  Object  Photograph  Document  Book

Description:

Collection Historical Society of

in black frame

Object ID/Accession # 3000-88

Object Name pen and ink drawing of

Category original artwork

Date/Year Range 2000

Title pen and ink of Franklinville School

Creator/Author/Artist ? GPM - 2000



Wissahickon Valley

*historical society*

Ambler  
Lower Gwynedd  
Whitpain

Item Type  Object  Photograph  Document  Book

Description:

Collection Historical Society of

Object ID/Accession # 3000-89

Object Name watercolor of Boxwood

Category original art

Date/Year Range 1999

Title

Creator/Author/Artist "G"



Wissahickon Valley

historical society

Ambler  
Lower Gwynedd  
Whitpain

Item Type  Object  Photograph  Document  Book

Collection Historical Society of

Object ID/Accession # 3000-90

Object Name framed photo

Category photograph

Date/Year Range

Title Normandy Farm barns/silos

Creator/Author/Artist

Description:

colored photograph of Normandy Farm barn and twin silos labeled Normandy Estates Barns





Item Type  Object  Photograph  Document  Book

Collection Historical Society of

Object ID/Accession # 3000-91

Object Name letter from state PA

Category official document

Date/Year Range 1977

Title letter from state of PA to Whitpain Township

Creator/Author/Artist Milton Shapp, governor of PA

Description:

Typed letter from Milton Shapp on the 250th anniversary of Centre Square Village - PA state seal (gold with blue ribbon) is attached Framed in gold/brown frame





Wissahickon Valley

historical society

Ambler  
Lower Gwynedd  
Whitpain

Item Type  Object  Photograph  Document  Book

Collection Historical Society of

Object ID/Accession # 3000-92

Object Name framed black and white

Category photography

Date/Year Range

Title Shady Grove School - from inside

Creator/Author/Artist

Description:

Black and white photo - looking out a window frame of original Shady Grove School - with woods outside.

Was located on Lewis Lane on land which is now Prophecy Creek Park - in the woods. Foundation can be located just off Lewis Lane







Wissahickon Valley

historical society

Ambler  
Lower Gwynedd  
Whitpain

Item Type  Object  Photograph  Document  Book

Collection Historical Society of

Object ID/Accession # 3000-93

Object Name black and white photo of

Category photography

Date/Year Range ~1914

Title house on Normandy Farm property

Description:

black and white photo of two story house with chimney at each end and porch in front. taken over a white picket fence with tree to the left. framed with brown wood

Creator/Author/Artist





Wissahickon Valley

historical society

Ambler  
Lower Gwynedd  
Whitpain

Item Type  Object  Photograph  Document  Book

Collection Historical Society of

Object ID/Accession # 3000-94

Object Name framed black and white

Category photography

Date/Year Range

Title original Shady Grove School

Creator/Author/Artist

Description:

black and white photography of outside corner of original Shady Grove School on Lewis Lane in woods - part of Prophecy Creek Park. Shows open shutters, corner of roof and wall with some plant growth on lower left







Wissahickon Valley

historical society

Ambler  
Lower Gwynedd  
Whitpain

Item Type  Object  Photograph  Document  Book

Collection Historical Society of

Object ID/Accession # 3000-95

Object Name color photo of Whitpain

Category photography

Date/Year Range

Title field at Normandy Farms

Creator/Author/Artist

Description:

color photograph of farm field at Normandy Farms - appears to be mature wheat or oat with green fence row on left, trees in background, cloudy sky, matted with red wood frame





Wissahickon Valley

historical society

Ambler  
Lower Gwynedd  
Whitpain

Item Type  Object  Photograph  Document  Book

Collection Historical Society of

Object ID/Accession # 3000-96

Object Name color photograph of

Category photography

Date/Year Range

Title color photo of Dawesfield

Creator/Author/Artist

Description:

color photo of Dawesfield on Lewis Lane.  
photo taken from Lewis Lane over stone wall  
seen in foreground, several trees between  
road and house, appears to be a foggy day.  
matted and framed in red wood frame





Wissahickon Valley

historical society

Ambler  
Lower Gwynedd  
Whitpain

Item Type  Object  Photograph  Document  Book

Collection Historical Society of

Object ID/Accession # 3000-97

Object Name Photo of Normandie Crest

Category photograph

Date/Year Range

Title photo of "Normandie" seal -

Creator/Author/Artist

Description:

photo of seal with two lions on shield with red background with a crown on top  
NORMANDIE at bottom  
matted and framed in read





Wissahickon Valley

historical society

Ambler  
Lower Gwynedd  
Whitpain

Item Type  Object  Photograph  Document  Book

Collection Historical Society of

Object ID/Accession # 3000-98

Object Name photo of Whitpain seal

Category photograph

Date/Year Range

Title Whitpain seal - photograph

Creator/Author/Artist

Description:

photo of round seal of Whitpain Township - in stained glass  
seal is round with "Whitpain Township - 1701 - Montgomery County Pennsylvania"





Wissahickon Valley

historical society

Ambler  
Lower Gwynedd  
Whitpain

Item Type  Object  Photograph  Document  Book

Collection Historical Society of

Object ID/Accession # 3000-99

Object Name certificate from Lincoln

Category historical document

Date/Year Range 1907

Title The Lincoln Farm Association certificate

Creator/Author/Artist

Description:

original document - with small illustration of Lincoln at the upper center, drapes along the two upper sides. "The Lincoln Farm Association" in center. signatures at bottom around red seal. border in green. Addressed to Hiram Klieble  
matted and in green wood frame.  
text states that the patriotic organization's purpose is to preserve the farm where Lincoln was born.  
Signatures include: Mark Twain, Ida Tarbell





Wissahickon Valley

*historical society*

Ambler  
Lower Gwynedd  
Whitpain

Item Type  Object  Photograph  Document  Book

Description:

Collection Historical Society of

Object ID/Accession # 3000-100

Object Name photo of St. John's

Category photography

Date/Year Range

Title

Creator/Author/Artist



Wissahickon Valley

*historical society*

Ambler  
Lower Gwynedd  
Whitpain

Item Type  Object  Photograph  Document  Book

Collection Historical Society of

Object ID/Accession # 3000-101

Object Name photo - 1903 Chicago

Category photography

Date/Year Range

Title 1903 Chicago Cubs photo

Creator/Author/Artist

Description:

Sepia photo of team members in uniform - including Richard Harley who grew up in Boxwood House, Whitpain framed





Wissahickon Valley

*historical society*

Ambler  
Lower Gwynedd  
Whitpain

Item Type  Object  Photograph  Document  Book

Collection Historical Society of

Object ID/Accession # 3000-102

Object Name photograph of Harley

Category photography

Date/Year Range

Title Ed Harley and 3 sons

Creator/Author/Artist

Description:

formal sepia photo of Ed Harley and 3 sons  
matted and framed





Wissahickon Valley

*historical society*

Ambler  
Lower Gwynedd  
Whitpain

Item Type  Object  Photograph  Document  Book

Collection Historical Society of

Object ID/Accession # 3000-103

Object Name photo - Boehms

Category photography

Date/Year Range

Title 100th anniversary of Boehm's church reunion photo

Creator/Author/Artist

Description:

panoramic black and white photo of congregation and building of Boehm's Church on Penllyn-Blue Bell Pike in Blue Bell. Taken in 1934. Photographer listed as Bussa, Norristown  
framed with glass



Wissahickon Valley

*historical society*

Ambler  
Lower Gwynedd  
Whitpain

Item Type  Object  Photograph  Document  Book

Collection Historical Society of

Object ID/Accession # 3000-104

Object Name photo of Boehm's church

Category photography

Date/Year Range 1940

Title Bicentennial Anniversary photo of Boehm's church and parishioners

Creator/Author/Artist

Description:

panoramic photo of Boehm's church building with parishioners in front - taken Sept. 22, 1940 at communion service  
black and white photo



Wissahickon Valley

*historical society*

Ambler  
Lower Gwynedd  
Whitpain

Item Type  Object  Photograph  Document  Book

Description:

Collection Historical Society of

Object ID/Accession # 3000-105

Object Name quilt

Category textiles

Date/Year Range

Title The Blue Bell Quilt

Creator/Author/Artist Blue Bell Questers



Wissahickon Valley

*historical society*

Ambler  
Lower Gwynedd  
Whitpain

Item Type  Object  Photograph  Document  Book

Collection

Object ID/Accession # 2485

Object Name railroad station sign

Category sign

Date/Year Range ~2000

Title SEPTA station sign

Creator/Author/Artist

Description:

two sided heavy plastic sign,  
side 1 - R5 - Lansdale  
side 2 - R5 - Paoli  
small writing - R5 Lansdale-Paoli on each  
end.



Wissahickon Valley

*historical society*

Ambler  
Lower Gwynedd  
Whitpain

Item Type  Object  Photograph  Document  Book

Collection Historical Society of

Object ID/Accession # 3000-1

Object Name food chopper

Category kitchen utensil

Date/Year Range early 20th century

Title food chopper

Description:

glass jar bottom (3" diameter x 4 3/4" high)  
with still plunger with metal chopper at the  
end with blades - plunger has a wooden knob.

Creator/Author/Artist





Wissahickon Valley

historical society

Ambler  
Lower Gwynedd  
Whitpain

Item Type  Object  Photograph  Document  Book

Collection Historical Society of

Object ID/Accession # 3000-2

Object Name metal can of soap

Category kitchen utensil

Date/Year Range early 20th century

Title metal can of soap

Description:

round metal can of Mione Soap  
Mione Mfg. Co., Darby PA  
soap in fine powder

Creator/Author/Artist





Wissahickon Valley

historical society

Ambler  
Lower Gwynedd  
Whitpain

Item Type  Object  Photograph  Document  Book

Collection Historical Society of

Object ID/Accession # 3000-3

Object Name lemon squeezer

Category kitchen utensil

Date/Year Range early 20th century

Title lemon squeezer

Description:

wooden lemon squeezer with metal hinge

Creator/Author/Artist







Wissahickon Valley

historical society

Ambler  
Lower Gwynedd  
Whitpain

Item Type  Object  Photograph  Document  Book

Collection Historical Society of

Object ID/Accession # 3000-4

Object Name level

Category building tool

Date/Year Range ~1895

Title level

Description:

wooden tool - level  
marked on metal - "Stanley No. 104" and  
"Made in USA"

Creator/Author/Artist







Item Type  Object  Photograph  Document  Book

Collection Historical Society of

Object ID/Accession # 3000-5

Object Name brace

Category tool

Date/Year Range early 20th century

Title brace

Description:

tool for drilling holes in wood  
made of metal and wood with curved handle

Creator/Author/Artist





Wissahickon Valley

*historical society*

Ambler  
Lower Gwynedd  
Whitpain

Item Type  Object  Photograph  Document  Book

Collection Historical Society of

Object ID/Accession # 3000-6

Object Name potato masher

Category kitchen utensil

Date/Year Range late 19th century

Title potato masher

Description:

wooden potato masher, shaped like a bell with a long handle

Creator/Author/Artist





Wissahickon Valley

*historical society*

Ambler  
Lower Gwynedd  
Whitpain

Item Type  Object  Photograph  Document  Book

Collection Historical Society of

Description:

wooden masher

Object ID/Accession # 3000-7

Object Name potato masher

Category kitchen utensil

Date/Year Range early 20th century

Title potato masher

Creator/Author/Artist





Wissahickon Valley

historical society

Ambler  
Lower Gwynedd  
Whitpain

Item Type  Object  Photograph  Document  Book

Collection Historical Society of

Object ID/Accession # 3000-8

Object Name carpet beater

Category household tool

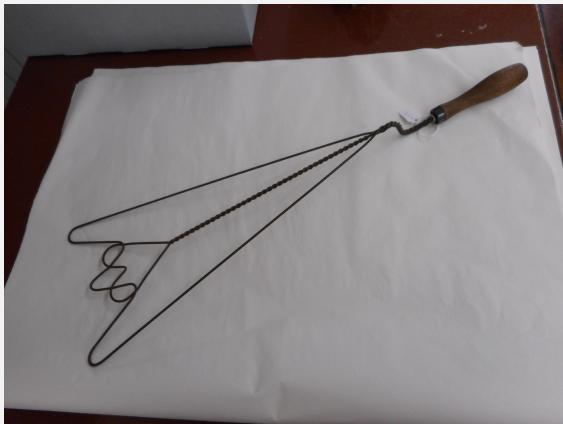
Date/Year Range early 20th century

Title carpet beater

Description:

wooden handle on arrangement of flexible,  
twisted wire tubes.

Creator/Author/Artist





Wissahickon Valley

historical society

Ambler  
Lower Gwynedd  
Whitpain

Item Type  Object  Photograph  Document  Book

Collection Historical Society of

Object ID/Accession # 3000-9

Object Name dipper

Category kitchen utensil

Date/Year Range early 20th century

Title dipper

Creator/Author/Artist

Description:

"combination" dipper (with original label) - 1 pint, metal  
label reads "use it as a dipper, graduated one pint measure, funnel, fruit jar filler. fine and coarse strainer, egg poacher, etc."  
"hand me up - always ready for use"





Wissahickon Valley

historical society

Ambler  
Lower Gwynedd  
Whitpain

Item Type  Object  Photograph  Document  Book

Collection Historical Society of

Object ID/Accession # 3000-10

Object Name masher

Category kitchen utensil

Date/Year Range early 20th century

Title masher

Description:

"s" shaped metal masher with green painted wooden handle  
mark: ANDROCK - made in USA, No. 1735256  
- Pat. 1-12-29

Creator/Author/Artist







Wissahickon Valley

historical society

Ambler  
Lower Gwynedd  
Whitpain

Item Type  Object  Photograph  Document  Book

Collection Historical Society of

Object ID/Accession # 3000-11

Object Name crimper

Category kitchen utensil

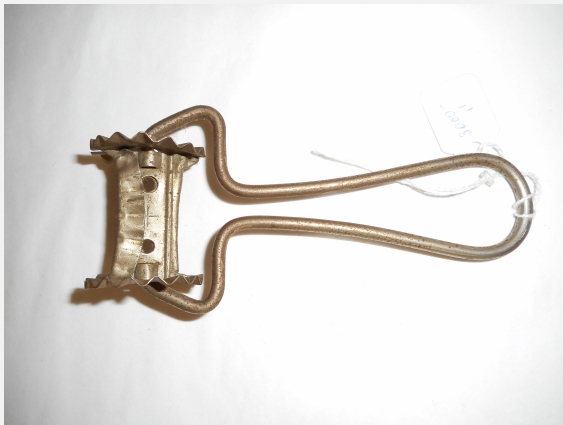
Date/Year Range early 20th century

Title crimper

Description:

metal with handle and 2 rollers

Creator/Author/Artist





Wissahickon Valley

*historical society*

Ambler  
Lower Gwynedd  
Whitpain

Item Type  Object  Photograph  Document  Book

Collection Historical Society of

Object ID/Accession # 3000-12

Object Name herb chopper

Category kitchen utensil

Date/Year Range 1930s

Title herb chopper

Description:

metal chopper with 10 disks, green painted wooden handle

Creator/Author/Artist







Wissahickon Valley

historical society

Ambler  
Lower Gwynedd  
Whitpain

Item Type  Object  Photograph  Document  Book

Collection Historical Society of

Object ID/Accession # 3000-13

Object Name bottle opener

Category kitchen utensil

Date/Year Range ~1930

Title bottle opener

Description:

metal bottle opener with green wooden handle

Creator/Author/Artist





Wissahickon Valley

historical society

Ambler  
Lower Gwynedd  
Whitpain

Item Type  Object  Photograph  Document  Book

Collection Historical Society of

Object ID/Accession # 3000-14

Object Name cloth fan

Category textiles - wearable

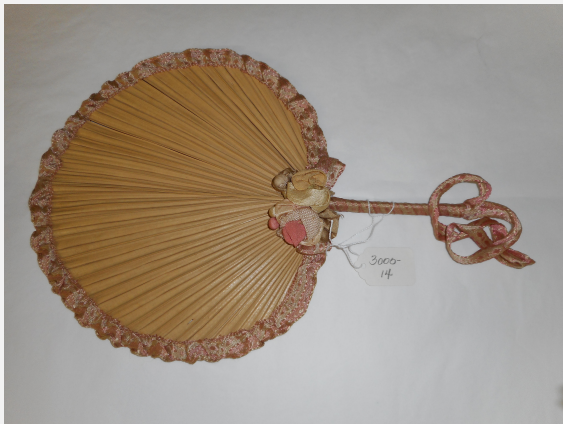
Date/Year Range early 20th century

Title textile fan

Description:

round cloth fan, beige folded silk, bound by pink and beige ribbons, wooden handle wound in pink and beige ribbon. fabric flowers at top of handle on one side.

Creator/Author/Artist





Wissahickon Valley

*historical society*

Ambler  
Lower Gwynedd  
Whitpain

Item Type  Object  Photograph  Document  Book

Collection Historical Society of

Object ID/Accession # 3000-15

Object Name child's pantaloons

Category textiles - wearable

Date/Year Range early 20th century

Title child's pantaloons

Creator/Author/Artist

Description:

fine white cotton pantaloons (underwear)  
gathered waistband, bottom holes (2 on each side)  
deep ruffles at bottom with crochet and embroidered decorations.





Item Type  Object  Photograph  Document  Book

Collection Historical Society of

Object ID/Accession # 3000-16

Object Name apron

Category textiles - wearable

Date/Year Range early 20th century

Title apron

Description:

fancy, lace apron with ribbon ties and waistband, fold up pockets with ribbon "flowers" at sides

Creator/Author/Artist





Item Type  Object  Photograph  Document  Book

Collection Historical Society of

Object ID/Accession # 3000-17

Object Name woman's blouse

Category textiles - wearable

Date/Year Range early 20th century

Title woman's blouse

Creator/Author/Artist

Description:

woman's off-white, cotton blouse.  
front buttons  
decorated yoke (eyelet embroidery)  
3/4 length sleeves -  
Label - "Coquette Blouse - handmade 40"







Wissahickon Valley

historical society

Ambler  
Lower Gwynedd  
Whitpain

Item Type  Object  Photograph  Document  Book

Collection Historical Society of

Object ID/Accession # 3000-18

Object Name woman's blouse

Category textiles - wearable

Date/Year Range early 20th century

Title woman's blouse

Description:

off-white silk blouse with long sleeves, sailor's collar, netting and embroidery at cuffs, collar, and front.  
fabric buttons

Creator/Author/Artist





Wissahickon Valley

historical society

Ambler  
Lower Gwynedd  
Whitpain

Item Type  Object  Photograph  Document  Book

Collection Historical Society of

Object ID/Accession # 3000-19

Object Name woman's blouse

Category textiles - wearable

Date/Year Range

Title woman's blouse

Creator/Author/Artist

Description:

off-white long sleeved blouse  
open stitch and embroidery on sleeves and  
front and around neck







Wissahickon Valley

historical society

Ambler  
Lower Gwynedd  
Whitpain

Item Type  Object  Photograph  Document  Book

Collection Historical Society of

Object ID/Accession # 3000-20

Object Name woman's hat

Category textile - wearable

Date/Year Range early 20th century

Title woman's hat

Description:

black hat made of woven silk strips over hair  
band frame  
black silk ribbons  
decorated with little white flowers and black  
lace

Creator/Author/Artist





Wissahickon Valley

*historical society*

Ambler  
Lower Gwynedd  
Whitpain

Item Type  Object  Photograph  Document  Book

Collection Historical Society of

Object ID/Accession # 3000-21

Object Name funnel

Category kitchen utensil

Date/Year Range early 20th century

Title funnel

Creator/Author/Artist

Description:

glass funnel, marked "Handy Funnel"  
"Armstrong's A"



Wissahickon Valley

*historical society*

Ambler  
Lower Gwynedd  
Whitpain

Item Type  Object  Photograph  Document  Book

Description:

Collection Historical Society of

turned wood

Object ID/Accession # 3000-22

Object Name potato masher

Category kitchen utensil

Date/Year Range early 20th century

Title potato masher

Creator/Author/Artist



Wissahickon Valley

*historical society*

Ambler  
Lower Gwynedd  
Whitpain

Item Type  Object  Photograph  Document  Book

Collection Historical Society of

Object ID/Accession # 3000-23

Object Name sieve

Category kitchen utensil

Date/Year Range early 20th century

Title sieve

Creator/Author/Artist

Description:

metal sieve with handle, cone-shaped  
mark: "Beaconware, Made in USA, no. HU5,  
Pat. 1761067



Wissahickon Valley

*historical society*

Ambler  
Lower Gwynedd  
Whitpain

Item Type  Object  Photograph  Document  Book

Collection Historical Society of

Object ID/Accession # 3000-24

Object Name mechanical sieve

Category kitchen utensil

Date/Year Range early 20th century

Title mechanical sieve

Creator/Author/Artist

Description:

metal mechanical sieve with handle which turns to mash food.  
handles have a green wooden knob  
two hooks on the bottom of the sieve which fit on a bowl during process



Wissahickon Valley

*historical society*

Ambler  
Lower Gwynedd  
Whitpain

Item Type  Object  Photograph  Document  Book

Collection Historical Society of

Object ID/Accession # 3000-25

Object Name bundt mold (cake pan)

Category kitchen utensil

Date/Year Range early 20th century

Title bundt pan

Creator/Author/Artist

Description:

round tin pan with a covered lid which has a metal handle



Wissahickon Valley

*historical society*

Ambler  
Lower Gwynedd  
Whitpain

Item Type  Object  Photograph  Document  Book

Collection Historical Society of

Object ID/Accession # 3000-26

Object Name cleaver

Category kitchen utensil

Date/Year Range early 20th century

Title cleaver

Description:

steel cleaver with a wooden handle

Creator/Author/Artist





Wissahickon Valley

*historical society*

Ambler  
Lower Gwynedd  
Whitpain

Item Type  Object  Photograph  Document  Book

Collection Historical Society of

Object ID/Accession # 3000-27

Object Name toaster

Category kitchen utensil

Date/Year Range early 20th century

Title toaster

Creator/Author/Artist

Description:

metal toaster, 9" plate with hole to allow heat from stove to toast bread  
wire frame to hold bread  
mark: Manufactured by WOLFF Appliance Corp., Long Island City, NY, USA



Wissahickon Valley

*historical society*

Ambler  
Lower Gwynedd  
Whitpain

Item Type  Object  Photograph  Document  Book

Collection Historical Society of

Object ID/Accession # 3000-28

Object Name embosser - seal

Category office tool

Date/Year Range late 20th century

Title embosser

Description:

brass embosser with handle  
seal reads: Whitpain Library Co. Incorporated  
1818

Creator/Author/Artist



Wissahickon Valley

*historical society*

Ambler  
Lower Gwynedd  
Whitpain

Item Type  Object  Photograph  Document  Book

Collection Historical Society of

Object ID/Accession # 3000-29

Object Name embosser

Category tool

Date/Year Range late 20th century

Title embosser

Creator/Author/Artist

Description:

Metal embosser with handle made by "M. Burrkeim, Phila"

"Whitpain Township Corporate Seal Pennsylvania" center

"Whitpain Township Municipal Improvement Authority" around the perimeter of seal



Wissahickon Valley

*historical society*

Ambler  
Lower Gwynedd  
Whitpain

Item Type  Object  Photograph  Document  Book

Collection Historical Society of

Object ID/Accession # 3000-30

Object Name spatula

Category kitchen utensil

Date/Year Range early 20th century

Title spatula

Creator/Author/Artist

Description:

metal spatula with wooden handle



Wissahickon Valley

*historical society*

Ambler  
Lower Gwynedd  
Whitpain

Item Type  Object  Photograph  Document  Book

Collection Historical Society of

Object ID/Accession # 3000-31

Object Name ladle

Category kitchen utensil

Date/Year Range early 20th century

Title ladle

Creator/Author/Artist

Description:

metal ladle with black wooden handle



Wissahickon Valley

*historical society*

Ambler  
Lower Gwynedd  
Whitpain

Item Type  Object  Photograph  Document  Book

Collection Historical Society of

Object ID/Accession # 3000-32

Object Name chopper

Category kitchen utensil

Date/Year Range early 20th century

Title chopper

Creator/Author/Artist

Description:

food chopper in metal with 4 blades  
green painted handle with white stripe





Wissahickon Valley

*historical society*

Ambler  
Lower Gwynedd  
Whitpain

Item Type  Object  Photograph  Document  Book

Collection Historical Society of

Object ID/Accession # 3000-33

Object Name cake mixer

Category kitchen utensil

Date/Year Range early 20th century

Title cake mixer

Creator/Author/Artist

Description:

metal cake mixer with black wooden knob.  
three gears - 2 blades (wire)



Item Type  Object  Photograph  Document  Book

Collection Historical Society of

Object ID/Accession # 3000-34

Object Name woman's cape

Category textile - wearable

Date/Year Range early 20th century

Title woman's cape

Description:

black velvet cape with black ruffle collar and tie  
eye hook clasp at neck  
lined with textured satin

Creator/Author/Artist





Wissahickon Valley

historical society

Ambler  
Lower Gwynedd  
Whitpain

Item Type  Object  Photograph  Document  Book

Collection Historical Society of

Object ID/Accession # 3000-35

Object Name woman's bonnet

Category textile - wearable

Date/Year Range early 20th century

Title woman's bonnet

Description:

black cotton fabric bonnet with drawstring

Creator/Author/Artist





Wissahickon Valley

historical society

Ambler  
Lower Gwynedd  
Whitpain

Item Type  Object  Photograph  Document  Book

Collection Historical Society of

Object ID/Accession # 3000-36

Object Name child's bonnet

Category textiles - wearable

Date/Year Range early 20th century

Title child's bonnet

Creator/Author/Artist

Description:

off white embroidered lace bonnet (machine made)  
lace trim  
fabric ties







Wissahickon Valley

historical society

Ambler  
Lower Gwynedd  
Whitpain

Item Type  Object  Photograph  Document  Book

Collection Historical Society of

Object ID/Accession # 3000-37

Object Name child's bib

Category textiles - wearable

Date/Year Range @ early 20th century

Title child's bib

Description:

off white fabric bib with two red and black vertical stripes and two red and black horizontal stripes.

between horizontal stripes: "MARY'S TEA PARTY"

picture of children sitting around a table playing with toys and animals. two strings attached at top.

Creator/Author/Artist





Wissahickon Valley

historical society

Ambler  
Lower Gwynedd  
Whitpain

Item Type  Object  Photograph  Document  Book

Collection Historical Society of

Object ID/Accession # 3000-38

Object Name apron

Category textile - wearable

Date/Year Range early 20th century

Title apron

Description:

black apron with teal trim and detailing and orange, purple, green, and gold flower embroidered flower design across chest.  
two pockets  
two ties for neck and waist

Creator/Author/Artist





Wissahickon Valley

historical society

Ambler  
Lower Gwynedd  
Whitpain

Item Type  Object  Photograph  Document  Book

Collection Historical Society of

Object ID/Accession # 3000-39

Object Name mourning veil

Category textile - wearable

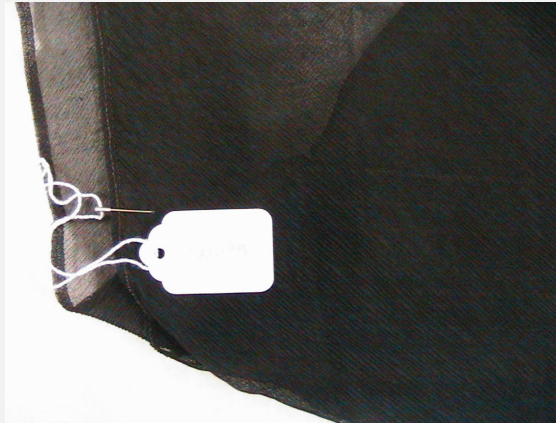
Date/Year Range early 20th century

Title mourning veil

Description:

shear black mourning veil  
square in shape

Creator/Author/Artist







Wissahickon Valley

# historical society

Ambler  
Lower Gwynedd  
Whitpain

Item Type  Object  Photograph  Document  Book

Collection Historical Society of

Object ID/Accession # 3000-40

Object Name woman's bonnet

Category textiles - wearable

Date/Year Range early 20th century

Title woman's bonnet

## Description:

black bonnet, velvet-like trim around front edge, knit/open weave material for main part of bonnet  
label - "A (?)rle Heller, Paris, NewYork"

Creator/Author/Artist





Wissahickon Valley

historical society

Ambler  
Lower Gwynedd  
Whitpain

Item Type  Object  Photograph  Document  Book

Collection Historical Society of

Object ID/Accession # 3000-41

Object Name woman's apron

Category textiles - wearable

Date/Year Range early 20th century

Title woman's apron

Description:

off-white apron with two bands of red with black and yellow stitching.  
patterned stitching blue, yellow, and red  
between and above bands red braided  
trim/tassel waist tie at top  
tassels attached to wool

Creator/Author/Artist





Wissahickon Valley

*historical society*

Ambler  
Lower Gwynedd  
Whitpain

Item Type  Object  Photograph  Document  Book

Collection Historical Society of

Object ID/Accession # 3000-42

Object Name hat pin

Category accessories - wearable

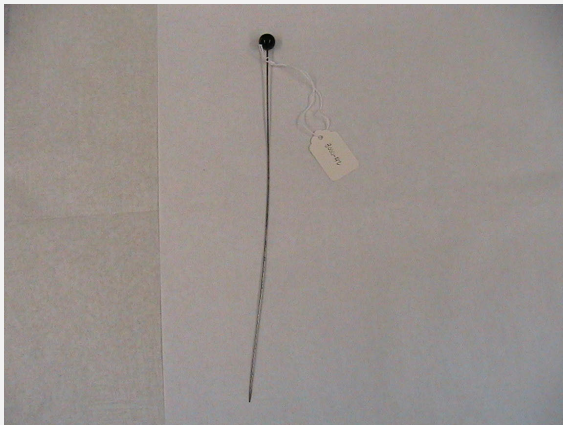
Date/Year Range early 20th century

Title hat pin

Description:

meetal hat pin with black, glass ball a end

Creator/Author/Artist





Wissahickon Valley

historical society

Ambler  
Lower Gwynedd  
Whitpain

Item Type  Object  Photograph  Document  Book

Collection Historical Society of

Object ID/Accession # 3000-43

Object Name fan

Category accessory - wearable

Date/Year Range early 20th century

Title fan

Description:

off-white feather fan  
feathers attached to yellowish resin/plastic  
"blades"  
fabric loop at end of frame

Creator/Author/Artist





Wissahickon Valley

*historical society*

Ambler  
Lower Gwynedd  
Whitpain

Item Type  Object  Photograph  Document  Book

Collection Historical Society of

Object ID/Accession # 3000-44

Object Name framed photograph

Category photography

Date/Year Range

Title framed photo of 1895 Schoolhouse

Creator/Author/Artist

Description:

gold metal frame  
black and white photo of 1895 Schoolhouse,  
Blue Bell, PA





Wissahickon Valley

*historical society*

Ambler  
Lower Gwynedd  
Whitpain

Item Type  Object  Photograph  Document  Book

Collection Historical Society of

Object ID/Accession # 3000-45

Object Name framed photo of Sat.

Category photography

Date/Year Range med-20th century

Title cover of Sat. Evening Post

Creator/Author/Artist

Description:

black frame

black and white photo of cover of Sat.

Evening Post

drawing of Fire Company, Centre Square, PA



Wissahickon Valley

*historical society*

Ambler  
Lower Gwynedd  
Whitpain

Item Type  Object  Photograph  Document  Book

Collection Historical Society of

Object ID/Accession # 3000-46

Object Name framed photograph - Mrs.

Category photography

Date/Year Range early 20th century

Title framed photo of Catherine Cuddihy Harley

Creator/Author/Artist

Description:

Black frame  
black and white photo of Catherine Cuddihy  
Harley, wife of Edawrd A. J. Harley - they  
lived in Boxwood





Wissahickon Valley

historical society

Ambler  
Lower Gwynedd  
Whitpain

Item Type  Object  Photograph  Document  Book

Collection Historical Society of

Object ID/Accession # 3000-47

Object Name water color painting - by

Category original art

Date/Year Range late 20th century

Title watercolor by Maggi Murr

Description:

watercolor painting of Franklinville School.  
Signed by Maggi Murr. matted in brass frame  
white mat

Creator/Author/Artist





Wissahickon Valley

*historical society*

Ambler  
Lower Gwynedd  
Whitpain

Item Type  Object  Photograph  Document  Book

Collection Historical Society of

Object ID/Accession # 3000-48

Object Name framed photograph -

Category photography

Date/Year Range

Title photograph of Normandy Farm brownstone

Creator/Author/Artist

Description:

framed black and white photograph of  
brownstone house (@1814?) on Normandy  
Farm  
brown wood frame



Wissahickon Valley

*historical society*

Ambler  
Lower Gwynedd  
Whitpain

Item Type  Object  Photograph  Document  Book

Collection Historical Society of

Object ID/Accession # 3000-49

Object Name framed photo - Normandy

Category photography

Date/Year Range

Title black and white photo - Normandy Farm house

Creator/Author/Artist

Description:

black and white photo of Normandy Farm  
tenant house  
brown wood frame



Wissahickon Valley

*historical society*

Ambler  
Lower Gwynedd  
Whitpain

Item Type  Object  Photograph  Document  Book

Collection Historical Society of

Object ID/Accession # 3000-50

Object Name photo of Franklinville

Category photography

Date/Year Range

Title photo of Franklinville School

Creator/Author/Artist

Description:

black and white photo of Franklinville School  
(1834)

brown wood frame



Wissahickon Valley

*historical society*

Ambler  
Lower Gwynedd  
Whitpain

Item Type  Object  Photograph  Document  Book

Collection Historical Society of

Object ID/Accession # 3000-51

Object Name photo of Franklinville Inn

Category photography

Date/Year Range

Title photograph of Franklinville Inn

Creator/Author/Artist

Description:

black and white photo of Franklinville Inn  
(1834)  
brown wood frame



Wissahickon Valley

*historical society*

Ambler  
Lower Gwynedd  
Whitpain

Item Type  Object  Photograph  Document  Book

Collection Historical Society of

Object ID/Accession # 3000-52

Object Name map of Whitpain

Category map

Date/Year Range

Title map of Whitpain Township

Creator/Author/Artist

Description:

pastel tinted map of Whitpain Township,  
Montgomery County, PA  
gold colored frame



Wissahickon Valley

historical society

Ambler  
Lower Gwynedd  
Whitpain

Item Type  Object  Photograph  Document  Book

Collection Historical Society of

Object ID/Accession # 3000-53

Object Name photo of Franklinville

Category photography

Date/Year Range

Title black and white photo of Franklinville School, Whitpain Township

Creator/Author/Artist

Description:

black and white photo of Franklinville School,  
Whitpain Township, Montgomery County, PA  
- built 1853  
shows school before "fix-up" - pre-1980s





Wissahickon Valley

*historical society*

Ambler  
Lower Gwynedd  
Whitpain

Item Type  Object  Photograph  Document  Book

Collection Historical Society of

Object ID/Accession # 3000-54

Object Name photo of school bus

Category photography

Date/Year Range

Title photo of old school bus

Creator/Author/Artist

Description:

black and white photo of original school bus  
along Skippack Pike,  
Whitpain School District - early 20th century  
plastic frame

story is: kids used to gather in the back of the  
bus which would lift the front wheels off the  
ground



Wissahickon Valley

historical society

Ambler  
Lower Gwynedd  
Whitpain

Item Type  Object  Photograph  Document  Book

Collection Historical Society of

Object ID/Accession # 3000-55

Object Name fur muff

Category accessory - wearable

Date/Year Range early 20th century

Title fur muff

Description:

brown fur muff - possibly muskrat  
lined with brown fabric  
brown fabric ruffle at openings

Creator/Author/Artist





Wissahickon Valley

*historical society*

Ambler  
Lower Gwynedd  
Whitpain

Item Type  Object  Photograph  Document  Book

Description:

Collection Historical Society of

Object ID/Accession # 3000-56

Object Name Whitpain high school

Category school memorabilia

Date/Year Range

Title

Creator/Author/Artist



Wissahickon Valley

*historical society*

Ambler  
Lower Gwynedd  
Whitpain

Item Type  Object  Photograph  Document  Book

Description:

Collection Historical Society of

Object ID/Accession # 3000-57

Object Name drawing of Wentz's United

Category original art

Date/Year Range

Title drawing of Wentz's United Church of Christ

Creator/Author/Artist William Witzel



Wissahickon Valley

*historical society*

Ambler  
Lower Gwynedd  
Whitpain

Item Type  Object  Photograph  Document  Book

Collection Historical Society of

Object ID/Accession # 3000-58

Object Name photo of St. John

Category photograph

Date/Year Range

Title framed photograph of St. John Lutheran Church

Creator/Author/Artist

Description:

St. John Lutheran Church  
Rt. 73  
Centre Square, PA



Wissahickon Valley

*historical society*

Ambler  
Lower Gwynedd  
Whitpain

Item Type  Object  Photograph  Document  Book

Collection Historical Society of

Object ID/Accession # 3000 - 59

Object Name saddle maker's mould

Category implement

Date/Year Range early 20th century

Title saddle maker's mould

Creator/Author/Artist

Description:

irregular shaped wooden implement





Wissahickon Valley

*historical society*

Ambler  
Lower Gwynedd  
Whitpain

Item Type  Object  Photograph  Document  Book

Collection Historical Society of

Object ID/Accession # 3000 - 60

Object Name ceramic mug

Category ceramic souvenir

Date/Year Range 1988

Title souvenir ceramic mug

Creator/Author/Artist

Description:

has Centre Square Fire Co. logo - 75th anniversary  
also photos of 1988, 1987, and 1919 fire vehicles  
beige color



Wissahickon Valley

*historical society*

Ambler  
Lower Gwynedd  
Whitpain

Item Type  Object  Photograph  Document  Book

Collection Historical Society of

Object ID/Accession # 3000 - 61

Object Name ceramic mug

Category ceramic souvenir

Date/Year Range 1975

Title ceramic souvenir mug

Creator/Author/Artist

Description:

on mug: Centre Square Fire Co.  
Incorporated 1913  
picture of fire engine/parade  
dated May 24, 1975  
Whitpain Twp., PA



Wissahickon Valley

*historical society*

Ambler  
Lower Gwynedd  
Whitpain

Item Type  Object  Photograph  Document  Book

Collection Historical Society of

Object ID/Accession # 3000 - 62

Object Name glass milk bottle

Category advertisement

Date/Year Range mid-20th century

Title glass milk bottle

Creator/Author/Artist

Description:

clear glass, one pint sized milk bottle from  
Meyers Dairies, Ambler, PA  
labeled "Homogenized Milk, Vitamin D"



Wissahickon Valley

*historical society*

Ambler  
Lower Gwynedd  
Whitpain

Item Type  Object  Photograph  Document  Book

Description:

Collection Historical Society of

small, clear glass with cork

Object ID/Accession # 3000 - 63

Object Name doll's nursing bottle

Category toy

Date/Year Range mid-19th century

Title doll's nursing bottle

Creator/Author/Artist



Wissahickon Valley

*historical society*

Ambler  
Lower Gwynedd  
Whitpain

Item Type  Object  Photograph  Document  Book

Collection Historical Society of

Object ID/Accession # 3000 - 64

Object Name asparagus buncher

Category farm tool

Date/Year Range early 20th century

Title asparagus buncher

Creator/Author/Artist

Description:

iron and brass hand tool - handle with ratchet,  
round opening for asparagus, wooden base  
marked "E. D. M. Co., Phila.



Wissahickon Valley

*historical society*

Ambler  
Lower Gwynedd  
Whitpain

Item Type  Object  Photograph  Document  Book

Collection Historical Society of

Object ID/Accession # 3000 - 65

Object Name ceramic mug

Category souvenir - ceramic

Date/Year Range late 20th century

Title ceramic mug

Creator/Author/Artist

Description:

beige ceramic material - "Whitpain Township  
Montgomery County,

Pennsylvania

1701"

Whitpain Township seal - hand shake, 3 trees,  
turtle





Item Type  Object  Photograph  Document  Book

Description:

Collection Historical Society of

Object ID/Accession # 3000 - 66

Object Name glass bottle

Category glass

Date/Year Range

Title glass bottle

Creator/Author/Artist



Wissahickon Valley

*historical society*

Ambler  
Lower Gwynedd  
Whitpain

Item Type  Object  Photograph  Document  Book

Collection Historical Society of

Object ID/Accession # 3000 - 67

Object Name silver vase

Category accessories

Date/Year Range 1991

Title silver vase

Creator/Author/Artist

Description:

silver colored vase - rounded - wider at bottom, narrower at top  
engraved - "Historical Society of Whitpain - 1987 - 1991"



Wissahickon Valley

*historical society*

Ambler  
Lower Gwynedd  
Whitpain

Item Type  Object  Photograph  Document  Book

Collection Historical Society of

Object ID/Accession # 3000 - 68

Object Name child's sailor suit

Category clothing

Date/Year Range early 20th century

Title child's sailor suit with hat and American flag

Creator/Author/Artist

Description:

blue and white child's sailor suit with hat  
made by ROWE, Gasport, England  
small American flag with 48 stars



Item Type  Object  Photograph  Document  Book

Collection Historical Society of

Object ID/Accession # 3000 - 69

Object Name photograph of Dawesfield

Category photography

Date/Year Range

Title Dawesfield photograph

Creator/Author/Artist

Description:

black and white photograph of Dawesfield  
(Lewis Lane)  
glass, matted, and framed (brown wood)





Wissahickon Valley  
*historical society*

Ambler  
Lower Gwynedd  
Whitpain

Item Type  Object  Photograph  Document  Book

Description:

Collection

Object ID/Accession # 3000 - 70

Object Name

Category

Date/Year Range

Title

Creator/Author/Artist



Wissahickon Valley

historical society

Ambler  
Lower Gwynedd  
Whitpain

Item Type  Object  Photograph  Document  Book

Collection Historical Society of

Object ID/Accession # 3000 - 71

Object Name copy - photo of Custer

Category photography

Date/Year Range early 20th century

Title photo of Custer Station - Township Line, Whitpain

Description:

black and white copy of Custer Station - once called Wack's Mill  
Used in "Crossroads in Time"

Creator/Author/Artist







Wissahickon Valley

*historical society*

Ambler  
Lower Gwynedd  
Whitpain

Item Type  Object  Photograph  Document  Book

Collection Historical Society of

Object ID/Accession # 3000 - 72

Object Name photograph - near

Category photography

Date/Year Range late 20th century

Title photograph of road near Normandy Farm

Description:

black and white  
in silver painted wooden frame

Creator/Author/Artist





Wissahickon Valley

historical society

Ambler  
Lower Gwynedd  
Whitpain

Item Type  Object  Photograph  Document  Book

Collection Historical Society of

Object ID/Accession # 3000 - 73

Object Name photograph of Skippack

Category photography

Date/Year Range about 1906

Title photograph of Skippack Pike at Centre Square - about 1906

Creator/Author/Artist Robert Beck

Description:

black and white photo of man walking walking up unpaved Skippack Pike - entitled by photographer "The Patriot" because it is the same route that Washington walked with his army after the battle of Germantown.





Wissahickon Valley

historical society

Ambler  
Lower Gwynedd  
Whitpain

Item Type  Object  Photograph  Document  Book

Collection Historical Society of

Object ID/Accession # 3000 - 74

Object Name photograph of St. John's

Category photography

Date/Year Range

Title photo of St. John's Lutheran Church

Creator/Author/Artist

Description:

black and white photograph in plastic frame





Wissahickon Valley

*historical society*

Ambler  
Lower Gwynedd  
Whitpain

Item Type  Object  Photograph  Document  Book

Collection Historical Society of

Object ID/Accession # 3000 - 75

Object Name School Souvenir Booklet,

Category books

Date/Year Range 1920

Title school souvenir booklet

Creator/Author/Artist

Description:

from Slatedale Secondary School, Lehigh  
County, PA

includes photos



Item Type  Object  Photograph  Document  Book

Collection Historical Society of

Object ID/Accession # 3000 - 76

Object Name class photo

Category photography/school

Date/Year Range 1945

Title photograph - Whitpain High School - June 1945

Description:

black and white photograph - image of 1916 School in center - surrounded by photos of faculty members and graduating students with names. (see misc. notes.)

Creator/Author/Artist





Wissahickon Valley

*historical society*

Ambler  
Lower Gwynedd  
Whitpain

Item Type  Object  Photograph  Document  Book

Collection Historical Society of

Object ID/Accession # 3000 - 77

Object Name woman's nightcap

Category textiles

Date/Year Range early 20th century

Title woman's nightcap

Creator/Author/Artist

Description:

also called snoozecap  
pink silk with lace





Wissahickon Valley

*historical society*

Ambler  
Lower Gwynedd  
Whitpain

Item Type  Object  Photograph  Document  Book

Collection Historical Society of

Object ID/Accession # 3000 - 78

Object Name baby's dress

Category textiles

Date/Year Range early 20th century

Title baby's dress

Creator/Author/Artist

Description:

off-white fabric with pink smocking, lace trim



Wissahickon Valley

*historical society*

Ambler  
Lower Gwynedd  
Whitpain

Item Type  Object  Photograph  Document  Book

Collection Historical Society of

Object ID/Accession # 3000 - 79

Object Name photograph of Normandy

Category photography

Date/Year Range

Title photograph of Normandy Farm, Blue Bell

Creator/Author/Artist

Description:

black and white photograph  
in brown wooden frame



Item Type  Object  Photograph  Document  Book

Collection Historical Society of

Object ID/Accession # 3000 - 80

Object Name photograph of Normandy

Category photography

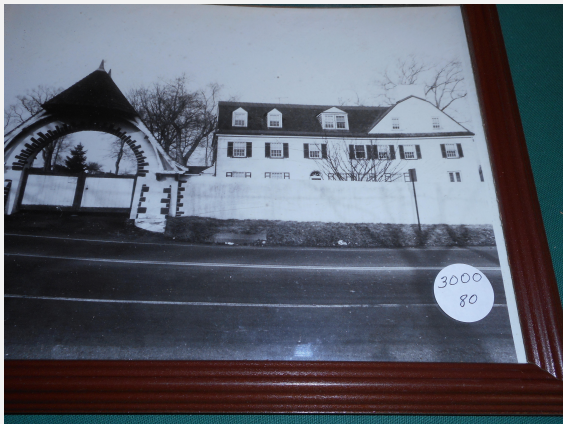
Date/Year Range late 20th century

Title photograph of Normandy Farm gate, wall, and house

Description:

black and white photograph in brown wooden frame

Creator/Author/Artist





Wissahickon Valley

*historical society*

Ambler  
Lower Gwynedd  
Whitpain

Item Type  Object  Photograph  Document  Book

Collection Historical Society of

Object ID/Accession # 3000 - 81

Object Name hair clippers

Category tools

Date/Year Range

Title hair clippers

Creator/Author/Artist

Description:

professional model - metal  
in black and orange box  
labeled Haarschneidemaschine



Wissahickon Valley

*historical society*

Ambler  
Lower Gwynedd  
Whitpain

Item Type  Object  Photograph  Document  Book

Collection Historical Society of

Object ID/Accession # 3000 - 82

Object Name pieces of Franklinville

Category building material

Date/Year Range

Title foundation material from Franklinville School

Creator/Author/Artist

Description:

rubble (stone, concrete), partially painted green



Wissahickon Valley

historical society

Ambler  
Lower Gwynedd  
Whitpain

Item Type  Object  Photograph  Document  Book

Collection Historical Society of

Object ID/Accession # 3000 - 83

Object Name phtograph of tenant

Category photography

Date/Year Range

Title photograph of tenant farmhouse at Normandy Farms

Creator/Author/Artist

Description:

black and white

in brown wooden frame





Wissahickon Valley

historical society

Ambler  
Lower Gwynedd  
Whitpain

Item Type  Object  Photograph  Document  Book

Collection Historical Society of

Object ID/Accession # 3000 - 84

Object Name photograph of Normandy

Category photography

Date/Year Range late 20th century

Title photograph of Normandy Farms barns

Description:

colored photograph of Normandy Farm barns and silos

matted and framed in brown wooden frame

Creator/Author/Artist







Wissahickon Valley

*historical society*

Ambler  
Lower Gwynedd  
Whitpain

Item Type  Object  Photograph  Document  Book

Collection Historical Society of

Object ID/Accession # 3000 - 85

Object Name reading glasses

Category accessories

Date/Year Range early 20th century (?)

Title reading glasses

Creator/Author/Artist

Description:

metal frame with brass nose piece



Wissahickon Valley  
*historical society*

Ambler  
Lower Gwynedd  
Whitpain

Item Type  Object  Photograph  Document  Book

Description:

Collection

Object ID/Accession # 3000 - 86

Object Name

Category

Date/Year Range

Title

Creator/Author/Artist



Wissahickon Valley

historical society

Ambler  
Lower Gwynedd  
Whitpain

Item Type  Object  Photograph  Document  Book

Collection Historical Society of

Object ID/Accession # 3000 - 87

Object Name photograph of Blue Bell

Category photography

Date/Year Range 1900 ?

Title photograph of Blue Bell Inn, Skippack Pike and  
Penllyn-Blue Bell Pike

Creator/Author/Artist

Description:

black and white photo

with several people and horses in foreground

in black wooden frame





Wissahickon Valley

*historical society*

Ambler  
Lower Gwynedd  
Whitpain

Item Type  Object  Photograph  Document  Book

Collection Historical Society of

Object ID/Accession # 3000 - 88

Object Name drawing of Franklinville

Category original art

Date/Year Range 2000

Title pen and ink drawing of Franklinville School

Description:

in black frame

signed - "GPM - 2000"

Creator/Author/Artist



Wissahickon Valley

*historical society*

Ambler  
Lower Gwynedd  
Whitpain

Item Type  Object  Photograph  Document  Book

Collection Historical Society of

Object ID/Accession # 3000 - 89

Object Name watercolor painting of

Category original art

Date/Year Range 1999

Title watercolor painting of Boxwood

Creator/Author/Artist

Description:

signed with what seems to be a capital G or or  
mixture of G and J

framed



Wissahickon Valley

historical society

Ambler  
Lower Gwynedd  
Whitpain

Item Type  Object  Photograph  Document  Book

Collection Historical Society of

Object ID/Accession # 3000 - 90

Object Name color photo of Normandy

Category photography

Date/Year Range late 20th century

Title color photo of Normandy Farm barn and silos

Description:

with label - "Normandy Farms Estate Barns"

red wood frame with white mat

includes Twin Silos

Creator/Author/Artist





Wissahickon Valley

historical society

Ambler  
Lower Gwynedd  
Whitpain

Item Type  Object  Photograph  Document  Book

Collection Historical Society of

Object ID/Accession # 3000 - 91

Object Name letter from Milton Shapp -

Category document - letter

Date/Year Range 1977

Title letter from Milton Shapp - 1977

Creator/Author/Artist

Description:

to Centre Square, from Milton Shapp,  
Governor of PA - includes PA state seal

in honor of 250th anniversary of Centre  
Square village  
in wood frame







Wissahickon Valley

historical society

Ambler  
Lower Gwynedd  
Whitpain

Item Type  Object  Photograph  Document  Book

Collection Historical Society of

Object ID/Accession # 3000-93

Object Name black and white photo

Category photography

Date/Year Range early 20th century

Title Black and white photo of brownstone house at  
Normandy Farm

Creator/Author/Artist

Description:

photo taken over picket fence with trees in  
yard, other building off to left of photo  
house reportedly from ~1814





Wissahickon Valley

historical society

Ambler  
Lower Gwynedd  
Whitpain

Item Type  Object  Photograph  Document  Book

Collection Historical Society of

Object ID/Accession # 3000-94

Object Name black and white photo

Category photograph

Date/Year Range 1970s

Title Shady Grove elementary - black and white photo

Description:

framed photo of detail of original Shady Grove elementary on Lewis Lane, from exterior - shows shutters in poor condition and corner of building as well as outside plants

Creator/Author/Artist





Item Type  Object  Photograph  Document  Book

Collection Historical Society of

Object ID/Accession # 3000-95

Object Name color photograph of farm

Category phtography

Date/Year Range late 20th century

Title color photograph of Whitpain farmland

Description:

framed and matted color photograph,  
dark red wood frame

Creator/Author/Artist





Wissahickon Valley

historical society

Ambler  
Lower Gwynedd  
Whitpain

Item Type  Object  Photograph  Document  Book

Collection Historical Society of

Object ID/Accession # 3000-96

Object Name color photo of Dawesfield

Category photography

Date/Year Range late 20th century

Title color photo of Dawesfield/framed

Description:

photo of Dawesfield from Lewis Lane over stone wall with trees in foreground, slight foggy weather conditions, framed (red wood) and matted

Creator/Author/Artist





Wissahickon Valley

historical society

Ambler  
Lower Gwynedd  
Whitpain

Item Type  Object  Photograph  Document  Book

Collection Historical Society of

Object ID/Accession # 3000-97

Object Name color photograph of

Category photography

Date/Year Range late 20th century

Title photo of "Normandie" crest

Description:

crest has crown at top, two lions in center, "normandie" at bottom, double matted and framed in red wood.

Creator/Author/Artist







Wissahickon Valley

historical society

Ambler  
Lower Gwynedd  
Whitpain

Item Type  Object  Photograph  Document  Book

Collection Historical Society of

Object ID/Accession # 3000-98

Object Name photo of Whitpain seal -

Category photography

Date/Year Range late 20th century

Title photo of Whitpain Township seal

Description:

round seal with "Whitpain Township -  
Montgomery County - Pennsylvania" around  
border, shaking hands, trees, turtle and  
"1701"  
matted and framed

Creator/Author/Artist





Wissahickon Valley

historical society

Ambler  
Lower Gwynedd  
Whitpain

Item Type  Object  Photograph  Document  Book

Collection Historical Society of

Object ID/Accession # 3000-99

Object Name document - Lincoln Farm

Category ephemera

Date/Year Range dated 1907

Title certificate of enrollment - The Lincoln Farm Association

Creator/Author/Artist

Description:

certificate in black ink on beige paper with red seal at center bottom, etching of Lincoln at center top, buildings at left and right of Lincoln, states that this is an organization that seeks to preserve the birth place of Lincoln by raising funds from citizens. dated 1907, signed by numerous citizens including Mark Twain, Ida Tarbell. Suggests that one Hiram Klieble is an honorary member. Framed







Wissahickon Valley

*historical society*

Ambler  
Lower Gwynedd  
Whitpain

Item Type  Object  Photograph  Document  Book

Collection Historical Society of

Object ID/Accession # 3000-100

Object Name photo of St. John's

Category photography

Date/Year Range

Title photo of St. John's Lutheran Church, Blue Bell

Creator/Author/Artist

Description:

black and white photo of St. John's Lutheran Church, Blue Bell, Skippack Pike in black frame



Wissahickon Valley

*historical society*

Ambler  
Lower Gwynedd  
Whitpain

Item Type  Object  Photograph  Document  Book

Collection Historical Society of

Object ID/Accession # 3000-101

Object Name photo of 1903 Chicago

Category photography

Date/Year Range early 1900 - copy

Title photo of 1903 Chicago Cubs

Creator/Author/Artist

Description:

sepia toned photo of team - Chicago Cubs -  
National League Team - including Richard  
Harley, son of family that lived in Boxwood



Wissahickon Valley

*historical society*

Ambler  
Lower Gwynedd  
Whitpain

Item Type  Object  Photograph  Document  Book

Collection Historical Society of

Object ID/Accession # 3000-102

Object Name photo of Ed Hurley and 3

Category photography

Date/Year Range early 20th century - copy

Title photo of Ed Hurley and sons

Creator/Author/Artist

Description:

Ed Hurley and family lived at Boxwood, son  
Richard Hurley played baseball with the 1903  
Chicago Cubs  
sepia toned photo  
framed and double matted



Wissahickon Valley

*historical society*

Ambler  
Lower Gwynedd  
Whitpain

Item Type  Object  Photograph  Document  Book

Collection Historical Society of

Object ID/Accession # 3000-103

Object Name photo of Boehms Evang.

Category photography

Date/Year Range 1934

Title black and white photo of 100th anniversary of Boehms  
Evangelical and Reformed Church, Blue Bell, Pa, July

Creator/Author/Artist Bussa, Norristown listed as photographer

Description:

photo of attendees at the anniversary  
celebration,  
landscape photo, black and white



Wissahickon Valley

*historical society*

Ambler  
Lower Gwynedd  
Whitpain

Item Type  Object  Photograph  Document  Book

Collection Historical Society of

Object ID/Accession # 3000-104

Object Name photo of Boehms Church

Category photography

Date/Year Range 1940

Title photo - Boehms Reformed Church Bicentennial Anniv.  
1940

Creator/Author/Artist

Description:

black and white photograph,  
landscape photo of communion service with  
parishioners  
outside of church



Wissahickon Valley

*historical society*

Ambler  
Lower Gwynedd  
Whitpain

Item Type  Object  Photograph  Document  Book

Collection Historical Society of

Object ID/Accession # 3000-105

Object Name quilt

Category textiles

Date/Year Range

Title friendship quilt created/sewn by Whitpain Questers

Creator/Author/Artist designed by Becky Huttinger, quilt maker - Evelyn McAdams

Description:

large block quilt in beige, blue, yellow, teal cotton fabric

An original copyrighted design - Reg. # Class G - 61783

Each Quester member sewed own "bell" - 18 bells.

Signatures embroidered by Cyrene Williams  
More detailed attributions are listed on accession sheets



Wissahickon Valley

*historical society*

Ambler  
Lower Gwynedd  
Whitpain

Item Type  Object  Photograph  Document  Book

Collection Historical Society of

Object ID/Accession # 3000-106

Object Name book - "Stepping Stone to

Category book - ephemera

Date/Year Range copyright 1899

Title "Stepping Stone to Literature" - fifth grade reader

Creator/Author/Artist by Sarah Louise Arnold and Charles B. Gilbert - Silver Burdett Co.

Description:

tan cover with maroon lettering  
hardcover  
Silver Burdett Co. Publishing, New York,  
Boston, Chicago  
95 pages  
Stamped "Whitpain School District"





Wissahickon Valley

historical society

Ambler  
Lower Gwynedd  
Whitpain

Item Type  Object  Photograph  Document  Book

Collection Historical Society of

Object ID/Accession # 3000-107

Object Name book - "Merry Chimes"

Category book - ephemera

Date/Year Range copyright 1865

Title education book "Merry Chimes"

Creator/Author/Artist L. O. Emerson

Description:

full title - Merry Chimes - A Collection of Songs, Duets, Treasured and Scared Pieces for Juvenile Classes, Public Schools, and Seminaries - to which is prefixed complete Elementary Instructions and Attractive Exercises" - Oliver Detson and Co., 277 Washington Street, New York, 1865  
224 pages, dark brown on brown hardcover



Wissahickon Valley

*historical society*

Ambler  
Lower Gwynedd  
Whitpain

Item Type  Object  Photograph  Document  Book

Collection Historical Society of

Object ID/Accession # 3000-108

Object Name book - "Practice Primer"

Category book - ephemera

Date/Year Range copyright 1915

Title school book "Practice Primer - The Horace Mann Readers

Creator/Author/Artist Walter L. Hervey, PhD and Malvis Hix, BS

Description:

published by Longmans, Green, and Co., New York, Chicago, 1915.

119 pages, mustard colored hardback cover with black lettering



Wissahickon Valley

*historical society*

Ambler  
Lower Gwynedd  
Whitpain

Item Type  Object  Photograph  Document  Book

Description:

Collection Historical Society of

publisher John Paine, Hartford

Object ID/Accession # 3000-109

Object Name book - "Key to Smith's

Category book - ephemera

Date/Year Range early 20th century ?

Title school book "Key to Smith's Practical and Mental  
Arithmetic - Designed for Teachers Only"

Creator/Author/Artist Roswell C. Smith



Wissahickon Valley

*historical society*

Ambler  
Lower Gwynedd  
Whitpain

Item Type  Object  Photograph  Document  Book

Collection Historical Society of

Object ID/Accession # 3000-110

Object Name book - "Winona Hymns"

Category book - ephemera

Date/Year Range 1906

Title book - "Winona Hymns"

Creator/Author/Artist compiled by J. Wilbur Chapman, edited by E. O. Excell

Description:

edited for the Evangelistic Committee  
published by The Westminster Press,  
Philadelphia, PA  
paperback, brown on tan  
220 pages



Wissahickon Valley

*historical society*

Ambler  
Lower Gwynedd  
Whitpain

Item Type  Object  Photograph  Document  Book

Collection Historical Society of

Object ID/Accession # 3000-111

Object Name book - "Union Reader -

Category book - ephemera

Date/Year Range copyright 1861

Title school book - "Union Reader - Number 1" - For  
Primary Schools and Families"

Creator/Author/Artist Charles W. Sanders

Description:

published by American Book Company, New  
York, Cincinnati, Chicago  
96 pages  
green, hardback cover



Wissahickon Valley

historical society

Ambler  
Lower Gwynedd  
Whitpain

Item Type  Object  Photograph  Document  Book

Collection Historical Society of

Object ID/Accession # 3000-112

Object Name book - Union Reader -

Category book - ephemera

Date/Year Range copyright 1862

Title school book "Union Reader - Number 2 - Containing exercises in Reading, Definitions, Articulations, etc."

Creator/Author/Artist Charlies W. Sanders

Description:

Published by Ivision, Phinney, Blakeman and Co., New York

264 pages

Green paper on cover with black letters

Hardback



Wissahickon Valley

*historical society*

Ambler  
Lower Gwynedd  
Whitpain

Item Type  Object  Photograph  Document  Book

Collection Historical Society of

Object ID/Accession # 3000-113

Object Name book - "The Pioneers and

Category book - ephemera

Date/Year Range copyright 1873

Title school book - "The Pioneers and Patriots of America -  
Ferdinand DeSoto - the Discoverer of the Mississippi"

Creator/Author/Artist John S. C. Abbott

Description:

published Dodd and Mead, No. 762 Broadway,  
New York  
black and gold on red hardback  
351 pages  
label on inside cover "No. 1143 - Whitpain  
Library"





Wissahickon Valley

*historical society*

Ambler  
Lower Gwynedd  
Whitpain

Item Type  Object  Photograph  Document  Book

Collection Historical Society of

Object ID/Accession # 3000-114

Object Name book - "The Pioneers and

Category book - ephemera

Date/Year Range copyright 1879

Title school book - The Pioneers and Patriots of America -  
Christopher Carson, Familiarly Known as Kit Carson"

Creator/Author/Artist John S. C. Abbott

Description:

published by Dodd/Mead, No. 762 Broadway,  
New York,  
348 pages  
Illustrated  
Hardback - Black, lettering in gold



Wissahickon Valley

*historical society*

Ambler  
Lower Gwynedd  
Whitpain

Item Type  Object  Photograph  Document  Book

Collection Historical Society of

Object ID/Accession # 3000-115

Object Name book - "The New Normal

Category book - ephemera

Date/Year Range copyright 1873

Title school book - "The New Normal Mental Arithmetic - A  
Thorough and Complete Course - by Analysis and

Creator/Author/Artist Edward Brooks

Description:

published by Christopher Sauer Company, No.  
614 Arch Street, Philadelphia  
176 pages  
Brown hardback cover  
Notation inside front cover "Property of  
Whitpain School District - Franklinville School,  
No. 1A"



Wissahickon Valley

*historical society*

Ambler  
Lower Gwynedd  
Whitpain

Item Type  Object  Photograph  Document  Book

Collection Historical Society of

Object ID/Accession # 3000-116

Object Name book - "One Hundred

Category book - ephemera

Date/Year Range copyright 1887

Title school book - "One Hundred Days in Europe"

Creator/Author/Artist Oliver Wendell Holmes

Description:

published by Houghton, Mifflin, and Co., The  
Riverside Press, Cambridge  
327 pages  
Green and gold hardback  
Envelope inside cover stamped "School Library  
- Centre Square, PA"  
Also stamped "Whitpain Library Cl., No. 3018"



Wissahickon Valley

*historical society*

Ambler  
Lower Gwynedd  
Whitpain

Item Type  Object  Photograph  Document  Book

Collection Historical Society of

Object ID/Accession # 3000-117

Object Name book - "Monsieur

Category book - ephemera

Date/Year Range copyright 1900

Title school book - "Monsieur Beaucaire"

Creator/Author/Artist Booth Tarkington

Description:

published by Grosset and Dunlap, New York  
128 pages  
red hardcover  
Belonged to: Thomas R. White, Jr., 1807  
Delancey St., Phil.



Wissahickon Valley

*historical society*

Ambler  
Lower Gwynedd  
Whitpain

Item Type  Object  Photograph  Document  Book

Collection Historical Society of

Object ID/Accession # 3000-18

Object Name book - "South America -

Category book - ephemera

Date/Year Range copyright 1921

Title school book - "South America - Carpenter's New  
Geographical Reader"

Creator/Author/Artist Frank G. Carpenter

Description:

published by American Book Co., New York,  
Boston"

399 pages

copyright 1921

green and red hardback



Wissahickon Valley

*historical society*

Ambler  
Lower Gwynedd  
Whitpain

Item Type  Object  Photograph  Document  Book

Collection Historical Society of

Object ID/Accession # 3000-119

Object Name book - "Home Life in

Category book - ephemera

Date/Year Range copyright 1965

Title school book - "Home Life in Colonial Days"

Creator/Author/Artist Alice Morse Earle

Description:

published by MacMillan Company, New York  
copyright 1965  
470 pages  
orange, blue, and black hardback  
stamped "Upper Dublin School library"



Wissahickon Valley

*historical society*

Ambler  
Lower Gwynedd  
Whitpain

Item Type  Object  Photograph  Document  Book

Collection Historical Society of

Object ID/Accession # 3000-120

Object Name book - "Child Life in

Category book - ephemera

Date/Year Range copyright 1964

Title school book - Child Life in Colonial Days

Creator/Author/Artist Alice Morse Earle

Description:

publisher - Macmillan Company, New York

copyright - 1964

418 pages

yellow paisley design on hardback cover





Item Type  Object  Photograph  Document  Book

Description:

Collection

Object ID/Accession # 2577

Object Name

Category

Date/Year Range

Title

Creator/Author/Artist



Wissahickon Valley  
*historical society*

Ambler  
Lower Gwynedd  
Whitpain

Item Type  Object  Photograph  Document  Book

Description:

Collection

Object ID/Accession #

Object Name

Category

Date/Year Range

Title

Creator/Author/Artist



Wissahickon Valley

*historical society*

Ambler  
Lower Gwynedd  
Whitpain

Item Type  Object  Photograph  Document  Book

Collection WVHS Archives

Object ID/Accession # 4000

Object Name WVHS Archive - Book 1,

Category Documents - Archives

Date/Year Range 1975 - 1981

Title WVHS Archive - Book 1, from 1975 to 1981 (with  
Table of Contents)

Creator/Author/Artist Emmy Simon

Description:

The WVHS Archive - Book 1, contains the programs, meetings, events, tours, newsletters and directories covering the timeframe 1975 to 1981. The below Table of Contents details what is contained in Book 1.  
[BOOK 1](#)

[TABLE OF CONTENTS](#)

[WVHS Purpose and Historic Management](#)

Tax Number

1805 Whitpain High School



Item Type  Object  Photograph  Document  Book

Collection WVHS Archives

Object ID/Accession # 4001

Object Name WVHS Archive - Book 2,

Category Documents - Archives

Date/Year Range 1982 - 1983

Title WVHS Archive Table of Contents - Book 2 - 1982 - 1983

Creator/Author/Artist Emmy Simon

Description:

The WVHS Archive - Book 2, contains the programs, meetings, events, tours, newsletters and directories covering the timeframe 1982 - 1983. The attached Table of Contents details what is contained in Book 2.

**BOOK 2**

**TABLE OF CONTENTS**

General Meeting January 1982

Meeting at Russ and Jean Bellavance home.



Wissahickon Valley

historical society

Ambler  
Lower Gwynedd  
Whitpain

Item Type  Object  Photograph  Document  Book

Collection WVHS Archives

Object ID/Accession # 4003

Object Name WVHS Archive - Book 4,

Category Documents - Archives

Date/Year Range 1991 - 1995

Title WVHS Archive - Book 4, from 1991 to 1995 (with  
Table of Contents)

Creator/Author/Artist Emmy Simon

Description:

The WVHS Archive - Book 4, contains the programs, meetings, events, tours, newsletters and directories covering the timeframe 1991 to 1995. The attached Table of Contents and Addenda details what is contained in Book 4.

**BOOK 4**

**TABLE OF CONTENT**

January 1991 Meeting Notice

Bessie Bushman will offer a living history



Wissahickon Valley

historical society

Ambler  
Lower Gwynedd  
Whitpain

Item Type  Object  Photograph  Document  Book

Collection Library

Object ID/Accession # 4002

Object Name WVHS Archive - Book 3,

Category WVHS Archives

Date/Year Range 1984 - 1990

Title WVHS Archive - Book 3, from 1984 to 1990 (with  
Table of Contents)

Creator/Author/Artist Emmy Simon

Description:

The WVHS Archive - Book 3, contains the programs, meetings, events, tours, newsletters and directories covering the timeframe 1984 to 1990. The attached Table of Contents and Addenda details what is contained in Book 3.

**BOOK 3**

**TABLE OF CONTENT**

Letter Dated January 6, 1984

From Whitpain Township to Russell



Wissahickon Valley

*historical society*

Ambler  
Lower Gwynedd  
Whitpain

Item Type  Object  Photograph  Document  Book

Collection WVHS Archives

Object ID/Accession # 4004

Object Name WVHS Archive - Book 5,

Category Documents - Archives

Date/Year Range 1996 - 1998

Title WVHS Archive - Book 5, from 1996 to 1998 (with  
Table of Contents)

Creator/Author/Artist Emmy Simon

Description:

The WVHS Archive - Book 5, contains the programs, meetings, events, tours, newsletters and directories covering the timeframe 1996 to 1998. The attached Table of Contents and Addenda details what is contained in Book 5.

BOOK 5

TABLE OF CONTENTS

Poster for January 8, 1996 General Meeting

Speaker: Kenneth A. Hinde. "The Foundation





Wissahickon Valley

*historical society*

Ambler  
Lower Gwynedd  
Whitpain

Item Type  Object  Photograph  Document  Book

Collection WVHS Archives

Object ID/Accession # 4005

Object Name WVHS Archive - Book 6,

Category Documents - Archives

Date/Year Range 1999 - 2002

Title WVHS Archive - Book 6, from 1999 to 2002 (with  
Table of Contents)

Creator/Author/Artist Emmy Simon

Description:

The WVHS Archive - Book 6, contains the programs, meetings, events, tours, newsletters and directories covering the timeframe 1999 to 2002. The Table of Contents in the binder details what is contained in Book 6, along with the below Addenda.

Table of Contents is PDF saved online and available in the binder. Below is the Addenda to Book 6.

-----



Wissahickon Valley

*historical society*

Ambler  
Lower Gwynedd  
Whitpain

Item Type  Object  Photograph  Document  Book

Collection WVHS Archives

Object ID/Accession # 4006

Object Name WVHS Archive - Book 7,

Category Documents - Archives

Date/Year Range 2003 - 2005

Title WVHS Archive - Book 7, from 2003 to 2005 (with  
Table of Contents)

Creator/Author/Artist Emmy Simon

Description:

The WVHS Archive - Book 7, contains the programs, meetings, events, tours, newsletters and directories covering the timeframe 2003 to 2005. The attached Table of Contents details what is contained in Book 7.

[BOOK 7](#)

[TABLE OF CONTENTS](#)

[JANUARY 2003 NEWSLETTE](#)

Dr. Eli Zuckers will present at the January 13



Wissahickon Valley

historical society

Ambler  
Lower Gwynedd  
Whitpain

Item Type  Object  Photograph  Document  Book

Collection WVHS Archives

Object ID/Accession # 4007

Object Name WVHS Archive - Book 8,

Category Documents - Archives

Date/Year Range 2006 - 2009

Title WVHS Archive - Book 8, from 2006 to 2009 (with  
Table of Contents)

Creator/Author/Artist Emmy Simon

Description:

The WVHS Archive - Book 8, contains the programs, meetings, events, tours, newsletters and directories covering the timeframe 2006 to 2009. The attached Table of Contents details what is contained in Book 8.

BOOK 8

TABLE OF CONTENTS

January 2006 Newsletter

Celebrating the 300<sup>th</sup> birthday of Benjamin Franklin's birthday



Wissahickon Valley

historical society

Ambler  
Lower Gwynedd  
Whitpain

Item Type  Object  Photograph  Document  Book

Collection WVHS Archives

Object ID/Accession # 4008

Object Name WVHS Archive - Book 9,

Category Documents - Archives

Date/Year Range 2010 - 2014

Title WVHS Archive - Book 9, from 2010 - 2014 (with Table of Contents)

Creator/Author/Artist Emmy Simon

Description:

The WVHS Archive - Book 9, contains the programs, meetings, events, tours, newsletters and directories covering the timeframe 2010 to 2014. The attached Table of Contents details what is contained in Book 9.

[BOOK 9](#)

[TABLE OF CONTENTS](#)

[January 2010 Newsletter](#)

Program for January 11: "History of the Elmwood Park Zoo" presented by William



Wissahickon Valley

*historical society*

Ambler  
Lower Gwynedd  
Whitpain

Item Type  Object  Photograph  Document  Book

Collection WVHS Archives

Object ID/Accession # 4009

Object Name WVHS Archive - Book 10,

Category Documents - Archives

Date/Year Range 2015 to present

Title WVHS Archive - Book 10, from 2015 to present (with  
Table of Contents)

Creator/Author/Artist Emmy Simon

Description:

The WVHS Archive - Book 10, contains the programs, meetings, events, tours, newsletters and directories covering the timeframe 2015 to present. The attached Table of Contents details what is contained in Book 10 to date.



Wissahickon Valley

*historical society*

Ambler  
Lower Gwynedd  
Whitpain

Item Type  Object  Photograph  Document  Book

Collection WVHS Archives

Object ID/Accession # 4011

Object Name WVHS Property Records

Category Documents - Archives

Date/Year Range 1996 - 2000

Title WVHS Property Records

Creator/Author/Artist Emmy Simon

Description:

Contact information on Whitpain Township along with sections devoted to specific estimates and/or repairs for the 1895 Schoolhouse, i.e., painting, masonry, plumbing, electric, heating, grounds, signage and alarm system dating from 1996 to 2000.



Wissahickon Valley

*historical society*

Ambler  
Lower Gwynedd  
Whitpain

Item Type  Object  Photograph  Document  Book

Collection WVHS Archive

Object ID/Accession # 4010

Object Name WVHS Archive - Book 11

Category Documents - Archives

Date/Year Range 2017+ (place holder)

Title

Creator/Author/Artist

Description:

Empty binder for now, place holder for future information. May begin with 2017 information.





Wissahickon Valley

*historical society*

Ambler  
Lower Gwynedd  
Whitpain

Item Type  Object  Photograph  Document  Book

Collection WVHS Archives

Object ID/Accession # 4012.

Object Name National Register of

Category Documents - Archives

Date/Year Range December 20, 2006

Title National Register of Historic Places, Whitpain Public  
School 1895 Building (application w/ photo's and

Creator/Author/Artist John Simon

Description:

This is the complete application submittal package and approval, with photo's, dated 4/12/06, to the National Register of Historic Places requesting the 1895 Schoolhouse to be nominated/included as a significant local property. Application approved dated 10/23/06 is also included in the binder.



Wissahickon Valley

*historical society*

Ambler  
Lower Gwynedd  
Whitpain

Item Type  Object  Photograph  Document  Book

Collection WVHS Archives

Object ID/Accession # 4013

Object Name National Register of

Category Documents - Archives

Date/Year Range April 27, 2006

Title National Register of Historic Places, Whitpain Public  
School 1895 Building - application (no photo's)

Creator/Author/Artist John Simon

Description:

This is the application (does not include photo's) to the National Register of Historic Places for the 1895 Schoolhouse to be nominated/included as a significant local property. Note: the approval is part of Accession #4012 and also has photo's)



Wissahickon Valley

*historical society*

Ambler  
Lower Gwynedd  
Whitpain

Item Type  Object  Photograph  Document  Book

Collection WVHS Archives

Object ID/Accession # 4014

Object Name WVHS By-Laws, Lease

Category Documents - Archives

Date/Year Range 1981 - 1983

Title WVHS By-Laws, Lease and N P Korean Church Cross Easement plus other information

Creator/Author/Artist Frank Russo or Whitpain Township

Description:

1. The By-Laws.
2. The Lease, dated 6/21/82, between WVHS and the Township from 1981.
3. The Cross Easement is between North Penn Korean Church and the Township, dated 12/29/80.



Wissahickon Valley

*historical society*

Ambler  
Lower Gwynedd  
Whitpain

Item Type  Object  Photograph  Document  Book

Collection WVHS Archives

Object ID/Accession # 4015

Object Name WVHS Treasurer's

Category Documents - Archives

Date/Year Range 2009

Title WVHS Treasurer's Reports

Creator/Author/Artist John Simon and Henry S. Conard

Description:

1. Treasurer's Reports, from John Simon, for the year 2009.
2. Treasurer's Reports, from Henry S. Conard, from 10/75 to 5/79.



Wissahickon Valley

*historical society*

Ambler  
Lower Gwynedd  
Whitpain

Item Type  Object  Photograph  Document  Book

Collection WVHS Archives

Object ID/Accession # 4016

Object Name One Room Schoolhouse

Category Documents - Archives

Date/Year Range 5/20/1997

Title One Room Schoolhouse Reenactment

Creator/Author/Artist Cassandra L. Allen, Blue Bell Elementary School

Description:

WVHS allowed Cassandra Allen, a fifth grade student from the Blue Bell Elementary School, to hold her classes at the 1895 Schoolhouse to pursue her dream of experiencing life in the late 1800's and early 1900's. Cassandra researched the time period and students from Blue Bell Elementary volunteered to act as students and created costumes.



Wissahickon Valley

*historical society*

Ambler  
Lower Gwynedd  
Whitpain

Item Type  Object  Photograph  Document  Book

Collection WVHS Archives

Object ID/Accession # 4017

Object Name WVHS Meeting Notes by

Category Documents - Archives

Date/Year Range 2004 - 2006

Title Meeting Notes by Judy Grubb, from 2004 to 2006

Creator/Author/Artist Judy Grubb

Description:

Information from Judy Grubb regarding Board Meetings, General Membership Meetings, Membership Lists, Printing/Invoices, Resources and Newsletters from 2004 to 2006.



Wissahickon Valley

*historical society*

Ambler  
Lower Gwynedd  
Whitpain

Item Type  Object  Photograph  Document  Book

Collection WVHS Archives

Object ID/Accession # 4018

Object Name WVHS Historical

Category Documents - Archives

Date/Year Range 1975 - 1979

Title WVHS Historical Scrapbook, from 1975 to 1979

Creator/Author/Artist Unknown

Description:

The Scrapbook contains the list of WVHS Officers for various years, attendance sheets, programs, newspaper articles and member directories.



Wissahickon Valley

*historical society*

Ambler  
Lower Gwynedd  
Whitpain

Item Type  Object  Photograph  Document  Book

Collection WVHS Archives

Object ID/Accession # 4019

Object Name WVHS Historical

Category Documents - Archives

Date/Year Range 1972 - 1993

Title WVHS Historical Scrapbook, from 1972 to 1993

Creator/Author/Artist Frank J. Russo, Jr.

Description:

Contains programs, events, newspaper articles, directories, newsletters, photo's of 1895 Schoolhouse repairs, Market Day and meetings at member's home.





Wissahickon Valley

*historical society*

Ambler  
Lower Gwynedd  
Whitpain

Item Type  Object  Photograph  Document  Book

Collection Whitpain

Object ID/Accession # 4020

Object Name WVHS Photographs of

Category Photographs - Historic

Date/Year Range various

Title WVHS Photographs of Whitpain Township Sites

Creator/Author/Artist unknown

Description:

Photo's of:

1. Evans Mumbower Mill, 1992
2. Boxwood House, 1993, 1996
3. Whitpain Township Building ground breaking
4. Normandy Farms, 1989
5. Franklinville School, 1989
6. Ballenrose
7. Norristown Times Herald Newspaper 150th Anniversary, 1949
8. Strassberger Estate in France, Pre-WW II
9. Shady Grove School



Wissahickon Valley

*historical society*

Ambler  
Lower Gwynedd  
Whitpain

Item Type  Object  Photograph  Document  Book

Collection Ambler

Object ID/Accession # 4021

Object Name WVHS Photographs of

Category Photographs - Historic

Date/Year Range 2015 plus various dates

Title WVHS Photographs of Ambler Sites

Creator/Author/Artist unknown

Description:

Photo's of:

1. Ambler Savings & Loan, 2015
2. Ambler McDonald's, 2015
3. Ambler Borough Park
4. Ambler Theater, 2015
5. Ambler Post Office, 2015
6. Ambler Train Station, 2015
7. Ambler Library, 2015
8. Ambler Fire House, 2015
9. Mattison Avenue School
10. Keasbey & Mattison factory #2196
11. Burke Estate, #393



Wissahickon Valley

*historical society*

Ambler  
Lower Gwynedd  
Whitpain

Item Type  Object  Photograph  Document  Book

Collection Whitpain

Object ID/Accession # 4022

Object Name WVHS Photographs of

Category Photographs - Historic

Date/Year Range 1983 - 2014

Title WVHS Photographs of The Franklinville School and The  
Historical Society of Whitpain

Creator/Author/Artist Emmy Simon

Description:

Photo's of the Franklinville School and the  
Historical Society of Whitpain.



Wissahickon Valley

*historical society*

Ambler  
Lower Gwynedd  
Whitpain

Item Type  Object  Photograph  Document  Book

Collection WVHS Archives

Object ID/Accession # 4023

Object Name WVHS Guest Register

Category Documents - Archives

Date/Year Range 2012 - 2015

Title WVHS Guest Register Sign-In Sheets, 2012 - 2015

Creator/Author/Artist Peggy Johnston

Description:

Guest Sign-In Sheets from 2012 to 2015.



Wissahickon Valley

*historical society*

Ambler  
Lower Gwynedd  
Whitpain

Item Type  Object  Photograph  Document  Book

Collection WVHS Archives

Object ID/Accession # 4024

Object Name WVHS Visitors Register

Category Documents - Archives

Date/Year Range 1996 - 2011

Title WVHS Visitors Register

Creator/Author/Artist unknown

Description:

Visitor Register for guests to sign when attending WVHS programs.



Wissahickon Valley

*historical society*

Ambler  
Lower Gwynedd  
Whitpain

Item Type  Object  Photograph  Document  Book

Collection WVHS Archives

Object ID/Accession # 4025

Object Name WVHS 1895 Schoolhouse

Category Documents - Archives

Date/Year Range 1982 - 1983

Title WVHS 1895 Schoolhouse Restoration & Donation  
Ledger

Creator/Author/Artist unknown

Description:

The ledger tracks donations for the restoration of the 1895 Schoolhouse during 1982 and 1983.



Wissahickon Valley

*historical society*

Ambler  
Lower Gwynedd  
Whitpain

Item Type  Object  Photograph  Document  Book

Collection WVHS Archives

Object ID/Accession # 4026

Object Name WVHS Record of Income

Category Documents - Archives

Date/Year Range 2001 - 2008

Title WVHS Record of Income & Expenses, 2001 - 2008

Creator/Author/Artist unknown

Description:

Ledger containing the WVHS income & expenses from 2001 - 2008. Account number 001-3005400.



Wissahickon Valley

*historical society*

Ambler  
Lower Gwynedd  
Whitpain

Item Type  Object  Photograph  Document  Book

Collection Ambler

Object ID/Accession # 4027

Object Name Preliminary Historical

Category Documents - Historic

Date/Year Range 1990

Title Preliminary Historical Site Survey of Ambler, PA

Creator/Author/Artist Frank J. Russo, WVHS (1990)

Description:

The purpose of the survey was to identify those resources built before 1940 within the borough boundaries. This date was chosen based on the major influence of the Keasbey & Mattison Company and its cofounder, Dr. Richard V. Mattison, on the construction of housing and commercial properties through the 1930's.





Wissahickon Valley

*historical society*

Ambler  
Lower Gwynedd  
Whitpain

Item Type  Object  Photograph  Document  Book

Collection Ambler

Object ID/Accession # 4028

Object Name Historic Resource

Category Documents - Historic

Date/Year Range 1999

Title Historic Resource Comprehensive Survey of Ambler  
Borough, 1999, Volume 1 of 4

Creator/Author/Artist Conducted by WVHS and The Conservancy of  
Montgomery County; Funded by the PA Historical &

Description:

The purpose of the survey was to identify those resources built before 1940 within the borough boundaries. This date was chosen based on the major influence of the Keasbey & Mattison Company and its cofounder, Dr. Richard V. Mattison, on the construction of housing and commercial properties through the 1930's.



Wissahickon Valley

*historical society*

Ambler  
Lower Gwynedd  
Whitpain

Item Type  Object  Photograph  Document  Book

Collection Ambler

Object ID/Accession # 4029

Object Name Historic Resource

Category Documents - Historic

Date/Year Range 1999

Title Historic Resource Comprehensive Survey of Ambler Borough, 1999, Volume 2 of 4

Creator/Author/Artist Conducted by WVHS and The Conservancy of Montgomery County; Funded by the PA Historical &

Description:

The purpose of the survey was to identify those resources built before 1940 within the borough boundaries. This date was chosen based on the major influence of the Keasbey & Mattison Company and its cofounder, Dr. Richard V. Mattison, on the construction of housing and commercial properties through the 1930's.



Wissahickon Valley

*historical society*

Ambler  
Lower Gwynedd  
Whitpain

Item Type  Object  Photograph  Document  Book

Collection Ambler

Object ID/Accession # 4030

Object Name Historic Resource

Category Documents - Historic

Date/Year Range 1999

Title Historic Resource Comprehensive Survey of Ambler  
Borough, 1999, Volume 3 of 4

Creator/Author/Artist Conducted by WVHS and The Conservancy of  
Montgomery County; Funded by the PA Historical &

Description:

The purpose of the survey was to identify those resources built before 1940 within the borough boundaries. This date was chosen based on the major influence of the Keasbey & Mattison Company and its cofounder, Dr. Richard V. Mattison, on the construction of housing and commercial properties through the 1930's.



Wissahickon Valley

*historical society*

Ambler  
Lower Gwynedd  
Whitpain

Item Type  Object  Photograph  Document  Book

Collection Ambler

Object ID/Accession # 4031

Object Name Historic Resource

Category Documents - Historic

Date/Year Range 1999

Title Historic Resource Comprehensive Survey of Ambler  
Borough, 1999, Volume 4 of 4

Creator/Author/Artist Conducted by WVHS and The Conservancy of  
Montgomery County; Funded by the PA Historical &

Description:

The purpose of the survey was to identify those resources built before 1940 within the borough boundaries. This date was chosen based on the major influence of the Keasbey & Mattison Company and its cofounder, Dr. Richard V. Mattison, on the construction of housing and commercial properties through the 1930's.



Wissahickon Valley

*historical society*

Ambler  
Lower Gwynedd  
Whitpain

Item Type  Object  Photograph  Document  Book

Collection Ambler

Object ID/Accession # 4032

Object Name Historic Resource Survey

Category Documents - Historic

Date/Year Range 2002 (Pre-1940 resources)

Title Historic Resource Survey of Ambler Borough 1940's  
Resources - 2002

Creator/Author/Artist WVHS and the Conservancy of Montgomery County ;  
Funded by the Pennsylvania Historical & Museum

Description:

The Historic Resources Comprehensive Survey for Ambler Borough was conducted in October and November 2002 by the WVHS under the supervision of the Conservancy of Montgomery County. The purpose of the survey was to identify those resources built between 1940 and 1949 within the borough boundaries. This date was chosen since all resources built prior to 1940 had been documented in 1999 using the same methodology. This survey provides additional information on the borough's historic



Wissahickon Valley

*historical society*

Ambler  
Lower Gwynedd  
Whitpain

Item Type  Object  Photograph  Document  Book

Collection Ambler

Object ID/Accession # 4033

Object Name Historical Information on

Category Documents - Historic

Date/Year Range 1682 - 1888 and 1990

Title Historical Information on Early Ambler, PA which contains the Early History of Ambler 1682 - 1888

Creator/Author/Artist Frank J. Russo, Jr. and Dr. Mary Hough

Description:

A combination of the: Preliminary Historical Site Survey of Ambler, PA, by WVHS, in 1990 which includes descriptions of early homes in Ambler with copies of photos of homes, structures and people. The Early History of Ambler, by Dr. Mary Hough, which provides detail information on families, mills, Mary Ambler, tannery, Elliger Park, toll gates in Ambler, Independent School District of Ambler, Chronological Table of Events, 200 years of Ambler 1682 to 1888, churches, Keasbey and Mattison story. Article on



Wissahickon Valley

*historical society*

Ambler  
Lower Gwynedd  
Whitpain

Item Type  Object  Photograph  Document  Book

Collection WVHS Photographs

Object ID/Accession # 4034

Object Name WVHS Photo's - Historic

Category Photographs - Historic

Date/Year Range March 2011 plus others

Title WVHS Photo's - Historic Buildings (local area)

Creator/Author/Artist Peggy Johnston plus others

Description:

Photo's of historic buildings in Ambler,  
Whitpain, Lower Gwynedd and Whitmarsh.



Wissahickon Valley

*historical society*

Ambler  
Lower Gwynedd  
Whitpain

Item Type  Object  Photograph  Document  Book

Collection Ambler

Object ID/Accession # 4035

Object Name Historic American Building

Category Photographs - Historic

Date/Year Range 1994

Title Historic American Building Survey - Book 1

Creator/Author/Artist Thomas Heard (Historian)

Description:

A description and detailed photo's (copies) of below historic buildings in Ambler:

1. Ambler Warner Theater
2. Ambler Gazette Building
3. First National Bank of Ambler
4. Wyndham Hotel
5. Ambler Railroad Station
6. Ambler Railroad Station, Main Station
7. Ambler Railroad Station, Outbound Station
8. Ambler Railroad Station, Freight Station
9. Hart Mansion
10. Hart Mansion, Carriage House





Wissahickon Valley

*historical society*

Ambler  
Lower Gwynedd  
Whitpain

Item Type  Object  Photograph  Document  Book

Collection Ambler

Object ID/Accession # 4036

Object Name Historic American Building

Category Photographs - Historic

Date/Year Range 1994

Title Historic American Building Survey - Book 2

Creator/Author/Artist Thomas Heard (Historian)

Description:

The description and photo's (copies) of the below historic buildings in Ambler:

1. Trinity Episcopal Church, Rectory
2. Holy Trinity Church, Sexton's House
3. Keasbey & Mattison Company Store
4. Keasbey & Mattison Co., Garage
5. Keasbey & Mattison Co., Executive's House #1, #2, #3. #4, #5, #6, #7, #8 Lindenwold Avenue.
6. Keasbey & Mattison Co., Supervisor's House, 500, 502, 504, 506 Trinity Place.
7. Keasbey & Mattison Co., Attached Row



Wissahickon Valley

*historical society*

Ambler  
Lower Gwynedd  
Whitpain

Item Type  Object  Photograph  Document  Book

Collection Library

Object ID/Accession # 4037

Object Name Keasbey & Mattison, 1879

Category Ambler

Date/Year Range 1879 to 1962 (prepared

Title Keasbey & Mattison, 1879 - 1962 - WVHS Scrapbook  
#1 (prepared 1994)

Creator/Author/Artist Frank Russo, Jr.

Description:

A scrapbook of general information regarding Keasbey & Mattison Co., including sales receipts, photo's (orig and copies), Mattison's genealogy, Lindenwold castle, photo of actors shooting "Trouble with Angels", firemen putting out fire, St. Mary's villa...



Wissahickon Valley

*historical society*

Ambler  
Lower Gwynedd  
Whitpain

Item Type  Object  Photograph  Document  Book

Collection Ambler

Object ID/Accession # 4038.1-3

Object Name World War II Newsletters,

Category Community - Churches

Date/Year Range Sept. 30, 1942 - May 22,

Title WW II Newsletters by King's Daughters of First  
Presbyterian Church of Ambler (44 newsletters)

Creator/Author/Artist Helen R. Macomber and the King's Daughters  
(women's church circle)

Description:

The King's Daughters created and mailed a monthly newsletter giving local and a bit of national news, information on our service men and women when they were shipping out, on leave, getting married...a few sport jottings, and the highlights of the church activities to members of their church and community serving the nation. The newsletter started with 31 service men/women and grew to 310. The content also grew as service men/women sent letters to the King's Daughters requesting information on several other topics.



Item Type  Object  Photograph  Document  Book

Description:

Collection Library

Object ID/Accession # 4039

Object Name

Category

Date/Year Range

Title

Creator/Author/Artist



Item Type  Object  Photograph  Document  Book

Description:

Collection Library

Object ID/Accession # 4040

Object Name

Category

Date/Year Range

Title

Creator/Author/Artist



Wissahickon Valley

*historical society*

Ambler  
Lower Gwynedd  
Whitpain

Item Type  Object  Photograph  Document  Book

Collection Library

Object ID/Accession # 4041

Object Name Newton Howard Articles

Category Ambler

Date/Year Range 1997 - 1998

Title Newton Howard Articles, in the Enterprise, from 1997 to 1998

Creator/Author/Artist Newton Howard

Description:

The monthly Enterprise newspaper is enclosed in the binder with the following articles by Newton Howard:

1. Ambler's First Baseball Team (April 10, 1997)
2. The Corner in Ambler Where History Was Made (May 8, 1997)
3. The Doctor's Unique Tank House (July 10, 1997)
4. Carrie Heiss - 57 years an Ambler Business Woman (August 14, 1997)
5. The Doctor Discovers Ambler in 1882



Wissahickon Valley

historical society

Ambler  
Lower Gwynedd  
Whitpain

Item Type  Object  Photograph  Document  Book

Collection Library

Object ID/Accession # 4042

Object Name Newton Howard Articles

Category Ambler

Date/Year Range 1999

Title Newton Howard Articles in the Enterprise 1999

Creator/Author/Artist Newton Howard

Description:

The monthly Enterprise newspapers are enclosed in the binder with the following articles by Newton Howard:

1. The Blacksmith in Early Ambler (January 14, 1999)
2. When Pickering Field was Lindenwold Field (March 11, 1999)
3. The Ambler Toy Factory (May 13, 1999)
4. Low Bridge Ahead - Trolley vs. Railroad (June 11, 1999)
5. Memories of Old Ambler High School (July 8, 1999)



Wissahickon Valley

*historical society*

Ambler  
Lower Gwynedd  
Whitpain

Item Type  Object  Photograph  Document  Book

Collection Library

Object ID/Accession # 4043

Object Name Newton Howard Articles

Category Ambler

Date/Year Range 2000 - 2001

Title Newton Howard Articles in the Enterprise 2000 - 2001

Creator/Author/Artist Newton Howard

Description:

The monthly Enterprise newspapers are enclosed in the binder with the following Articles by Newton Howard:

1. Gilkey's Corner - Part 1 (May 11, 2000)
2. Gilkey's Corner - Part 2 (June 8, 2000)
3. Henry Slutter's Carriage Shop (July 13, 2000)
4. Wissahickon Fire Company - The Early Years (August 10, 2000)
5. Matthias Sheeleigh: The Pastor and the School (October 12, 2000)
6. The Ambler Opera House Stores





Wissahickon Valley

historical society

Ambler  
Lower Gwynedd  
Whitpain

Item Type  Object  Photograph  Document  Book

Collection Library

Object ID/Accession # 4045

Object Name History of Ambler

Category Ambler

Date/Year Range compiled 2014

Title History of Ambler Through the Eyes of Newt Howard

Creator/Author/Artist Newton Howard compiled by Buck Amey (Historian at the Fort Washington Historical Society)

Description:

Newton Howard has been a lifelong resident and keeper of Ambler folklore and history. For many years he operated the Howard Camera and Art Center on Butler Avenue in the heart of Ambler. Through his years spent dealing with the people of Ambler and the surrounding communities at Lower Gwynedd, Upper Dublin and Whitpain Townships he has amassed a treasure trove of fascinating history and stories, many of these stories were originally published in the Enterprise newspaper.



Wissahickon Valley

*historical society*

Ambler  
Lower Gwynedd  
Whitpain

Item Type  Object  Photograph  Document  Book

Collection Library

Object ID/Accession # 4044

Object Name Newton M. Howard,

Category Ambler

Date/Year Range unknown

Title Newton M. Howard, Articles from the Enterprise

Creator/Author/Artist Newton M. Howard

Description:

Newspaper cuttings from the Enterprise on the following topics:

1. Ambler's First Hotel
2. The Ambler Toy Factory
3. The Corner In Ambler Where History Was Made
4. Forest Avenue School Destroyed by Fire
5. First Air Mail Leaves Ambler in 1938
6. The Doctor's Unique Tank House
7. Celebrity Patient at Hospital in Ambler
8. The Doctor Discovers Ambler in 1882
9. An Italian Mission is Founded in Ambler



Wissahickon Valley

*historical society*

Ambler  
Lower Gwynedd  
Whitpain

Item Type  Object  Photograph  Document  Book

Collection Library

Object ID/Accession # 4046

Object Name Newton Howard Articles &

Category Ambler

Date/Year Range unknown

Title Newton Howard Articles & Manuscripts

Creator/Author/Artist Newton Howard

Description:

A professional presentation of the Articles and Manuscripts from Newton Howard in a bound presentation binder, possibly by Newton Howard, that would have appeared in the Enterprise newspaper and the Ambler Gazette.



Wissahickon Valley

*historical society*

Ambler  
Lower Gwynedd  
Whitpain

Item Type  Object  Photograph  Document  Book

Collection Library

Object ID/Accession # 4047

Object Name Newton Howard Articles

Category Ambler

Date/Year Range unknown

Title Newton Howard Articles collected by Art Driedger

Creator/Author/Artist Newton Howard

Description:

Various articles written by Newton Howard, which appeared in the Ambler Gazette or the Enterprise newspapers, and collected by Art Driedger.



Wissahickon Valley

*historical society*

Ambler  
Lower Gwynedd  
Whitpain

Item Type  Object  Photograph  Document  Book

Collection Library

Object ID/Accession # 4048.1-2

Object Name Unto the Sons

Category Ambler

Date/Year Range unknown

Title Unto the Sons

Creator/Author/Artist Gay Talese

Description:

A historical novel which traces the Talese family from Maida, Italy to Ambler, PA and finally to Ocean City, NJ. Pages where Ambler is mentioned are: 217 - 224, 234, 240 - 247, 413 - 438, 440, 556 - 562.

Have two books: 4048.1 and 4048.2



Wissahickon Valley

*historical society*

Ambler  
Lower Gwynedd  
Whitpain

Item Type  Object  Photograph  Document  Book

Collection Library

Object ID/Accession # 4049

Object Name Ambler Archival - 1856

Category Archives

Date/Year Range unknown

Title Ambler Archival - 1856 Train Wreck, Mary Ambler,  
Ambler Home and Documents

Creator/Author/Artist WVHS staff

Description:

History of Mary Ambler, the 1856 train wreck,  
the Ambler Home and various legal  
documents.



Wissahickon Valley

*historical society*

Ambler  
Lower Gwynedd  
Whitpain

Item Type  Object  Photograph  Document  Book

Collection Library

Object ID/Accession # 4050

Object Name Ambler Main Street &

Category Ambler

Date/Year Range 2000 - 2002

Title Ambler Main Street & Ambler Design Committee

Creator/Author/Artist Ambler Main Street

Description:

Information regarding the Applications for the Ambler Design Challenge Grant Program for business owners belonging to Ambler Main Street.



Wissahickon Valley

*historical society*

Ambler  
Lower Gwynedd  
Whitpain

Item Type  Object  Photograph  Document  Book

Collection Library

Object ID/Accession # 4051

Object Name Businesses in Ambler, PA

Category Ambler

Date/Year Range 1927

Title Businesses in Ambler, PA in 1927

Creator/Author/Artist provided by Art Driedger

Description:

Listing of all of the businesses in Ambler, PA during 1927.





Wissahickon Valley

*historical society*

Ambler  
Lower Gwynedd  
Whitpain

Item Type  Object  Photograph  Document  Book

Collection Library

Object ID/Accession # 4052

Object Name Ambler Businesses, 1914

Category Ambler

Date/Year Range 1914

Title Ambler Businesses, 1914

Creator/Author/Artist WVHS staff

Description:

A list of the businesses in Ambler, PA during 1914 and their newspaper ads and brochures.



Wissahickon Valley

*historical society*

Ambler  
Lower Gwynedd  
Whitpain

Item Type  Object  Photograph  Document  Book

Collection Library

Object ID/Accession # 4053.1-4

Object Name 1888 - 1963 Ambler

Category Ambler

Date/Year Range 1888 - 1963

Title 1888-1963 Ambler Greater Future 75th Anniversary

Creator/Author/Artist Ambler Borough

Description:

How Ambler was established and grew with their businesses, churches, mills and roadways.

Four copies of the same book:

4053.1

4053.2

4053.3

4053.4



Wissahickon Valley

*historical society*

Ambler  
Lower Gwynedd  
Whitpain

Item Type  Object  Photograph  Document  Book

Collection Library

Object ID/Accession # 4054

Object Name The Ambler Community

Category Ambler

Date/Year Range 1960

Title The Ambler Community Service and Business Directory  
1960

Creator/Author/Artist Published by The Ambler Business and Professional  
Women's Club Ambler, PA

Description:

Directory of Ambler businesses and  
community services available along with local  
ads.



Wissahickon Valley

*historical society*

Ambler  
Lower Gwynedd  
Whitpain

Item Type  Object  Photograph  Document  Book

Collection Library

Object ID/Accession # 4055

Object Name The Ambler Community

Category Ambler

Date/Year Range 1951

Title The Ambler Community Service and Business Directory  
1951

Creator/Author/Artist Published by The Business and Professional Women's  
Club of Ambler, PA

Description:

A directory of all businesses and services available in Ambler, PA, along with the businesses ads.



Wissahickon Valley

*historical society*

Ambler  
Lower Gwynedd  
Whitpain

Item Type  Object  Photograph  Document  Book

Collection Library

Object ID/Accession # 4056

Object Name Comprehensive Plan

Category Ambler

Date/Year Range November 1968

Title Comprehensive Plan Ambler Borough, Montgomery County, PA

Creator/Author/Artist Roy F. Weston and Montgomery County Planning Commission

Description:

The Comprehensive Development Plan is a guide to the future development of Ambler Borough. The general aim of the Plan is to make possible an improvement in the conditions of living and working in the Borough.



Wissahickon Valley

*historical society*

Ambler  
Lower Gwynedd  
Whitpain

Item Type  Object  Photograph  Document  Book

Collection Library

Object ID/Accession # 4057

Object Name Confirmation Records St.

Category Ambler - Churches

Date/Year Range 1908 - 1996

Title Confirmation Records St. John's Evangelical Lutheran  
Church of Ambler, PA

Creator/Author/Artist Abstracted by Ross Gordon Gerhart, III of Ambler, PA

Description:

For their records, an attempt was made to identify all Confirmations at St. John's Church from 1908 to 1996.



Wissahickon Valley

*historical society*

Ambler  
Lower Gwynedd  
Whitpain

Item Type  Object  Photograph  Document  Book

Collection Library

Object ID/Accession # 4058

Object Name A History of St. John's

Category Ambler - Churches

Date/Year Range 1908 - 1983

Title A History of St. John's Evangelical Lutheran Church

Creator/Author/Artist Ross Gordon Gerhart, III

Description:

This history retells many of the significant events in their life together.



Wissahickon Valley

*historical society*

Ambler  
Lower Gwynedd  
Whitpain

Item Type  Object  Photograph  Document  Book

Collection Library

Object ID/Accession # 4059

Object Name 1888-1988 Ambler

Category Ambler

Date/Year Range 1888 - 1988

Title 1888-1988 Ambler Centennial Keepsake Calendar

Creator/Author/Artist Ambler Borough

Description:

Commemorative calendar for the 1888-1988  
Centennial celebration for Ambler, PA.





Wissahickon Valley

*historical society*

Ambler  
Lower Gwynedd  
Whitpain

Item Type  Object  Photograph  Document  Book

Collection Library

Object ID/Accession # 4060.1-3

Object Name 100th Anniversary

Category Ambler

Date/Year Range 1891 - 1991

Title 100th Anniversary Wissahickon Fire Co., Ambler, PA

Creator/Author/Artist 100th Anniversary Committee

Description:

History of the Wissahickon Fire Company from 1891 to 1991 along with testimonials from local citizens and businesses. We have three copies, #4060.1 one blue hard cover the other two are #4060.2-3 beige soft cover.



Item Type  Object  Photograph  Document  Book

Collection Library

Object ID/Accession # 4061

Object Name 75th Anniversary

Category Ambler

Date/Year Range 1891 - 1966

Title 75th Anniversary Celebration Wissahickon Fire Co.,  
Ambler, PA

Creator/Author/Artist Wissahickon Fire Co. Committee

Description:

A history of the Wissahickon Fire Co., from 1891 to 1966 along with testimonials from citizens and businesses.



Wissahickon Valley

*historical society*

Ambler  
Lower Gwynedd  
Whitpain

Item Type  Object  Photograph  Document  Book

Collection Library

Object ID/Accession # 4062

Object Name Forest Avenue School

Category Ambler

Date/Year Range April 22, 2006

Title Forest Avenue School Reunion, April 22, 2006

Creator/Author/Artist Forest Avenue Reunion Committee

Description:

Reunion for anyone who was a former student, parent, teacher, administrators, support staff and other interested community members in the Forest Avenue School.



Wissahickon Valley

*historical society*

Ambler  
Lower Gwynedd  
Whitpain

Item Type  Object  Photograph  Document  Book

Collection Library

Object ID/Accession # 4063

Object Name The Town that Asbestos

Category Ambler

Date/Year Range 2001

Title The Town that Asbestos Built: The Industrialization of Ambler, PA

Creator/Author/Artist A thesis by Lynne Marie O'Hara

Description:

The thesis examines the impact of Keasbey & Mattison, innovators in the refinement and manufacturing of a variety of asbestos products, on Ambler and the surrounding region.



Wissahickon Valley

*historical society*

Ambler  
Lower Gwynedd  
Whitpain

Item Type  Object  Photograph  Document  Book

Collection Library

Object ID/Accession # 2540.1-3

Object Name Asbestos in Ambler - 3

Category Ambler

Date/Year Range January 2016

Title #1 - Reach Ambler; #2 - The Borit Asbestos Superfund Site; #3 Distillations Magazine

Creator/Author/Artist REACH Ambler, US EPA and the Chemical Heritage Foundation

Description:

Projects and information regarding the community, history and environmental health of Ambler, PA due to the asbestos manufacturing and piles in the community.



Wissahickon Valley  
*historical society*

Ambler  
Lower Gwynedd  
Whitpain

Item Type  Object  Photograph  Document  Book

Description:

Collection

Object ID/Accession #

Object Name

Category

Date/Year Range

Title

Creator/Author/Artist



Wissahickon Valley

*historical society*

Ambler  
Lower Gwynedd  
Whitpain

Item Type  Object  Photograph  Document  Book

Description:

Collection Library

Ambler, Local history? Book is in Italian.

Object ID/Accession # 4064

Object Name Chiese Di Maida

Category Ambler

Date/Year Range 2002

Title Chiese Di Maida

Creator/Author/Artist Giancarlo Leone



Wissahickon Valley

*historical society*

Ambler  
Lower Gwynedd  
Whitpain

Item Type  Object  Photograph  Document  Book

Collection Library

Object ID/Accession # 4065

Object Name Images of America,

Category Ambler

Date/Year Range 2003

Title Images of America, Ambler

Creator/Author/Artist Frank D. Quattrone and WVHS

Description:

Manuscript copy. Published by Arcadia.  
Documents the history of Ambler with the  
help of WVHS.





Wissahickon Valley

*historical society*

Ambler  
Lower Gwynedd  
Whitpain

Item Type  Object  Photograph  Document  Book

Collection Library

Object ID/Accession # 4066.1-7

Object Name Early History of Ambler -

Category Ambler

Date/Year Range 1682 - 1888

Title Early History of Ambler - original and revised versions

Creator/Author/Artist Dr. Mary P. H. Hough and the Ambler Bicentennial Commission and WVHS

Description:

Original version was published in 1936 outlining the history of Ambler during this period. During the Bicentennial preparations, the commission decided to reprint this book and add writing from Dr. Hough originally left out of the original book along with the "Keasbey and Mattison History" by Edward Humphreys Roberts.



Wissahickon Valley

*historical society*

Ambler  
Lower Gwynedd  
Whitpain

Item Type  Object  Photograph  Document  Book

Collection Library

Object ID/Accession # 4067

Object Name Dr. Mary P.H. Hough -

Category Ambler

Date/Year Range unknown

Title Dr. Mary P.H.Hough - Ambler Articles

Creator/Author/Artist Dr. Mary P.H.Hough

Description:

Articles from local newspapers about Ambler written by Dr. Mary P.H.Hough.



Wissahickon Valley

*historical society*

Ambler  
Lower Gwynedd  
Whitpain

Item Type  Object  Photograph  Document  Book

Collection Library

Object ID/Accession # 4068

Object Name Gardens at Lindenwold/

Category Ambler

Date/Year Range 1992

Title Garden's at Lindenwold / St. Mary's

Creator/Author/Artist Alice De Genzo, Temple U.

Description:

Historical sketch of Lindenwold, Explanation of the Site, Analysis of Design and Maps.



Wissahickon Valley

historical society

Ambler  
Lower Gwynedd  
Whitpain

Item Type  Object  Photograph  Document  Book

Collection Library

Object ID/Accession # 3000-70.1-10

Object Name Clara Beck Photo

Category Photographs and Articles

Date/Year Range unknown

Title Clara Beck Photo Collection (7 binders) and Articles (3 binders)

Creator/Author/Artist Clara Beck

Description:

Seven binders containing photographs taken by Clara Beck:

#3000-70.1 - (92) Vol 1 Exteriors, Churches and Cemeteries

#3000-70.2 - (92) Vol 2 Landscapes and Interiors

#3000-70.3 - (92) Vol 3 Travels and People

#3000-70.4 - (92) Voll 4 Miscellaneous - as yet Unidentified

#3000-70.5 - (1 - 86) Collection of 86 identified photo's

#3000-70.6 - (87) Collection of Photo's - 18



Wissahickon Valley

*historical society*

Ambler  
Lower Gwynedd  
Whitpain

Item Type  Object  Photograph  Document  Book

Collection Library

Object ID/Accession # 4069

Object Name Clara Beck Articles

Category Whitpain

Date/Year Range 1860-1937

Title Clara Beck Articles

Creator/Author/Artist collected by Art Driedger

Description:

Articles by or on Clara Beck:

1. An Independent Woman, Clara Beck, Writer, Historian and Photographer.
2. Whitpain Township "Pot-Pourri"
3. History of Whitpain Township, Boehm and Boehm Church.
4. History of Whitpain Township, Court Martials in Whitpain.



Wissahickon Valley

*historical society*

Ambler  
Lower Gwynedd  
Whitpain

Item Type  Object  Photograph  Document  Book

Collection Library

Object ID/Accession # 4070

Object Name Whitpain Historic and

Category Whitpain

Date/Year Range 1998

Title Whitpain Historic and Significant Structures with  
Photo's

Creator/Author/Artist unknown, possibly WVHS

Description:

House detail and photo's of historic structures  
in Whitpain built from 1700 to 1900.



Wissahickon Valley

*historical society*

Ambler  
Lower Gwynedd  
Whitpain

Item Type  Object  Photograph  Document  Book

Collection Library

Object ID/Accession # 4071

Object Name Time Line of Whitpain's

Category Whitpain

Date/Year Range 1760 - 2000

Title Time Line of Whitpain's Education System and History of 1895 High School Building and Whitpain's School

Creator/Author/Artist Compiled and Written by Bob Whittock

Description:

The booklet details Whitpain has had four church schools or private schools, two are still open. There have been seventeen different public school buildings in Whitpain. Eight still exist. Three are used as schools, one is now a church, two are maintained by the WVHS and two are private homes. Whitpain also has one college, The Montgomery County Community College.

The History of the 1895 Schoolhouse and the School System is similar to a detailed calendar



Wissahickon Valley

*historical society*

Ambler  
Lower Gwynedd  
Whitpain

Item Type  Object  Photograph  Document  Book

Collection Library

Object ID/Accession # 4072

Object Name Wissahickon Valley Public

Category Whitpain

Date/Year Range 1817 - 2004

Title #1 - A History of the Wissahickon Valley Public Library; #2 - Library and the Community Report; #3 -

Creator/Author/Artist Charles T. Christine PhD; Marjorie I. Smith; Robert M. Russell

Description:

Three documents detailing the history of the Wissahickon Valley Public Library: #1 - Commemorates the 70th anniversary of the Wissahickon Valley Public Library and details the roots and history of the Library. #2 - Documents the community history, library history, areas of service and growth. #3 - History of the library movement followed the economic development of the area.





Wissahickon Valley

*historical society*

Ambler  
Lower Gwynedd  
Whitpain

Item Type  Object  Photograph  Document  Book

Collection Library

Object ID/Accession # 4073

Object Name Whitpain's Education &

Category Whitpain

Date/Year Range 1760 - 1974

Title Whitpain's Education and Historical Sketches of Early Schoolhouses

Creator/Author/Artist Frank J. Russo, Jr.

Description:

Documents Whitpains schools from 1760, the public school system along with Historical Sketches of Early Schoolhouses.



Wissahickon Valley

*historical society*

Ambler  
Lower Gwynedd  
Whitpain

Item Type  Object  Photograph  Document  Book

Description:

Collection Library

History of the Whitpain Public Schools.

Object ID/Accession # 4074

Object Name Chronology of Whitpain

Category Whitpain

Date/Year Range 1766 - 1966

Title Chronology of Whitpain Public Schools

Creator/Author/Artist unknow



Wissahickon Valley

*historical society*

Ambler  
Lower Gwynedd  
Whitpain

Item Type  Object  Photograph  Document  Book

Collection Library

Object ID/Accession # 4075

Object Name Ambler/ Whitpain School

Category Whitpain

Date/Year Range 1930 - 2000

Title Ambler/ Whitpain School

Creator/Author/Artist unknown

Description:

Binder contains information regarding reunions, class photo's, graduations and handbooks in the Whitpain and Ambler Schools.



Wissahickon Valley

*historical society*

Ambler  
Lower Gwynedd  
Whitpain

Item Type  Object  Photograph  Document  Book

Collection Library

Object ID/Accession # 2235

Object Name Whitpain School

Category Whitpain

Date/Year Range 1920 - 2000

Title Whitpain School Collection

Creator/Author/Artist Collected by Bob Whittock

Description:

Class photo's, newspaper articles, letters and reunion information.



Wissahickon Valley

*historical society*

Ambler  
Lower Gwynedd  
Whitpain

Item Type  Object  Photograph  Document  Book

Collection Library

Object ID/Accession # 4076

Object Name Whitpain Elementary

Category Whitpain

Date/Year Range 1955 - 2000

Title Whitpain Elementary School

Creator/Author/Artist Joyce Keller Collection

Description:

A "Description of the Wissahickon School District Community", "Copy of the Dedidcation and Open House of the Whitpain Twp Elementary School", "A Brief History of the Wissahickon School District", "Blue Bell School Facility", speech, class photo's, newspaper articles, calendar of cultural events, Copy of Survey, Analysis and Coordination Recommendations for Social Services in Ambler.



Wissahickon Valley  
*historical society*

Ambler  
Lower Gwynedd  
Whitpain

Item Type  Object  Photograph  Document  Book

Description:

Collection

Object ID/Accession #

Object Name

Category

Date/Year Range

Title

Creator/Author/Artist



Wissahickon Valley

historical society

Ambler  
Lower Gwynedd  
Whitpain

Item Type  Object  Photograph  Document  Book

Collection Library

Object ID/Accession # 4077.1-6

Object Name St. John Evangelical

Category Whitpain - Churches/

Date/Year Range 1769 - 2014

Title St. John Evangelical Lutheran Church, Centre Square,  
PA - general items

Creator/Author/Artist Collected by Bob Whittock

Description:

1. The History of St. John Evangelical Lutheran Church, Centre Square, PA 245 years of Christian Service 1769 to 2014. Dedicated to the memory of Clara Beck and Bertha Mae (Beideman) Rezer.
2. Story about St. John's Historic Tree.
3. The Windows of St. John Lutheran Church, Centre Sq, PA.
4. The Organs of St. John Lutheran Church, Centre Sq., PA
5. Photo of Pastor Wetlier from St. John.
6. Letter from St. John's to George Taylor,



Wissahickon Valley  
*historical society*

Ambler  
Lower Gwynedd  
Whitpain

Item Type  Object  Photograph  Document  Book

Description:

Collection

Object ID/Accession #

Object Name

Category

Date/Year Range

Title

Creator/Author/Artist





Wissahickon Valley

historical society

Ambler  
Lower Gwynedd  
Whitpain

Item Type  Object  Photograph  Document  Book

Collection Lower Gwynedd Twp. -

Object ID/Accession # 4078.1-3

Object Name Fair Land, Gwynedd

Category Books - Local History

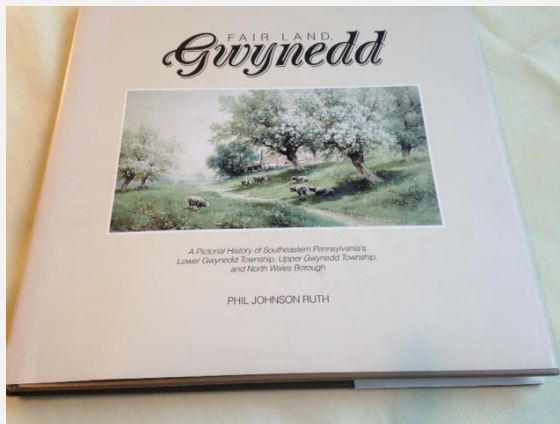
Date/Year Range 1891 - 1991

Title Fair Land, Gwynedd. A Pictorial History of  
Southeastern Pennsylvania's Lower Gwynedd

Creator/Author/Artist Phil Johnson Ruth

Description:

3 copies. A pictorial history of Southeastern PA's Lower Gwynedd Township, Upper Gwynedd Township and North Wales Borough to celebrate their 100th anniversary.





Wissahickon Valley

historical society

Ambler  
Lower Gwynedd  
Whitpain

Item Type  Object  Photograph  Document  Book

Collection Library

Object ID/Accession # 4079

Object Name Gwynedd-Mercy College

Category Lower Gwynedd

Date/Year Range 1778 - 2006

Title Gwynedd-Mercy College

Creator/Author/Artist Bond Centennial and Heritage Committee and Marion K. Rosenbaum, Archivist

Description:

History of the College to include:

1. Sisters of Mercy, Dublin to Gwynedd Valley.
2. Early Campus History, William Penn to the Taylors
3. Gwynedd-Mercy Academy and Junior College, 1947 - 1963
4. Gwynedd-Mercy College, 1964 - 1971
5. The Keiss Years, 1971 - 1993
6. The Mercy Legacy, 1994 and beyond



Wissahickon Valley

*historical society*

Ambler  
Lower Gwynedd  
Whitpain

Item Type  Object  Photograph  Document  Book

Collection Lower Gwynedd Twp. -

Object ID/Accession # 4080.1-2

Object Name Historical Collections of

Category Books - Local History

Date/Year Range 1698 - 1891

Title Historical Collections of Gwynedd

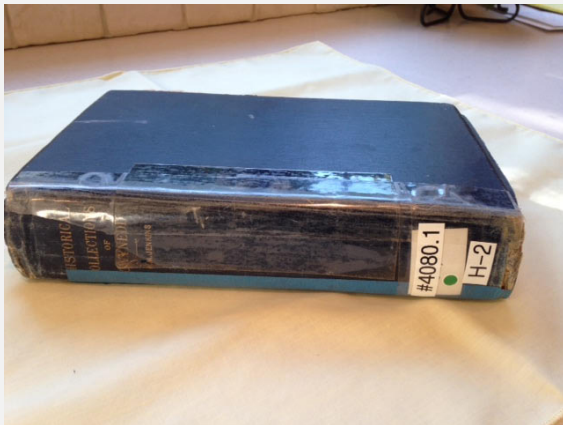
Creator/Author/Artist Howard M. Jenkins

Description:

Collection of historical and biographical nature relating to Gwynedd.

First edition - 1884

Second edition - 1897





Wissahickon Valley

*historical society*

Ambler  
Lower Gwynedd  
Whitpain

Item Type  Object  Photograph  Document  Book

Collection Library

Object ID/Accession # 4081.1-4

Object Name Sally Wister's Journal, A

Category Lower Gwynedd

Date/Year Range 1777 - 1778

Title Sally Wister's Journal, A True Narrative

Creator/Author/Artist Published by Applewood Books, Bedford,  
Massachusetts

Description:

Being a Quaker Maiden's Account of her experiences with Officers of the Continental Army, 1777-1778. Originally published 1902.

1. Paperback edition. 7.25"x.25"x5"
2. Hardback edition. 8"x1"x6"
3. Copy of her silhouette.
4. Newspaper articles found in the books.



Wissahickon Valley

*historical society*

Ambler  
Lower Gwynedd  
Whitpain

Item Type  Object  Photograph  Document  Book

Collection Library

Object ID/Accession # 4082

Object Name Catalogue of the

Category Lower Gwynedd

Date/Year Range September 29, 1922

Title Catalogue of the Complete Dispersal Sale of the Pine Run Farm Herd Shorthorns

Creator/Author/Artist Girard Trust Company, Agents for Executrix, Phila., PA;  
Auctioneers: Carey M. Jones, Chicago and Arthur A.

Description:

Sale of the shorthorn cattle on the Pine Run Farm, owing to the death of Mr. Henry P. McKean, the Proprietor of the Farm.



Wissahickon Valley

*historical society*

Ambler  
Lower Gwynedd  
Whitpain

Item Type  Object  Photograph  Document  Book

Collection Library

Object ID/Accession # 4083

Object Name Penllyn Village: Lest We

Category Lower Gwynedd

Date/Year Range 1700 - 2008

Title Penllyn Village: Lest We Forget

Creator/Author/Artist E. Gloria Stewart Jones

Description:

The major focus of this book is on the evolution of the black settlement in Penllyn, and the experiences of its residents over several generations. Her own memories of growing up in the village are very much a part of the work. Where appropriate, some chronological and socio-cultural factors which influenced their lives are included.



Wissahickon Valley

*historical society*

Ambler  
Lower Gwynedd  
Whitpain

Item Type  Object  Photograph  Document  Book

Collection Library

Object ID/Accession # 4084

Object Name A History of the Church of

Category Lower Gwynedd

Date/Year Range 1866 - 1966

Title A History of the Church of the Messiah, Gwynedd, PA,  
It's First Hundred Years 1866 - 1966

Creator/Author/Artist Nicholas B. Wainwright

Description:

The Centennial Year in the life of any Parish is a natural time to take a careful look at the past, the present and the future.



Wissahickon Valley

historical society

Ambler  
Lower Gwynedd  
Whitpain

Item Type  Object  Photograph  Document  Book

Collection Lower Gwynedd Twp. -

Object ID/Accession # 4085.1-3

Object Name Lower Gwynedd

Category Books - Local History

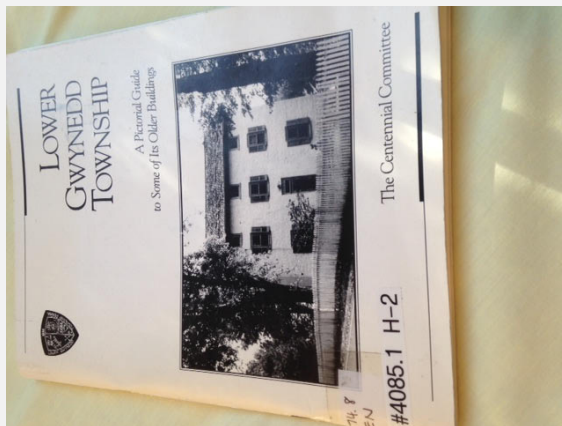
Date/Year Range 1698 - 1991

Title Lower Gwynedd Township, A Pictorial Guide to Some of Its Older Buildings

Creator/Author/Artist The Centennial Committee and McNeil Pharmaceutical

Description:

The book was never intended to be a complete history, merely a photographic record of our township's heritage.







Wissahickon Valley

*historical society*

Ambler  
Lower Gwynedd  
Whitpain

Item Type  Object  Photograph  Document  Book

Collection Library

Object ID/Accession # 4086

Object Name History of the Gwynedd

Category Lower Gwynedd

Date/Year Range 1974 - 1989

Title History of the Gwynedd Valley Garden Club

Creator/Author/Artist Becky Hesse

Description:

The Gwynedd Valley Garden Club was founded in 1974 and the members were eager to learn about landscaping and horticulture with the improvement of their own properties in mind. This grew to the improvement and beautification of the Gwynedd Valley Railroad Station. They were also active in forming a Gwynedd Valley Historical Society. Articles and photographs in the binder.



Wissahickon Valley

*historical society*

Ambler  
Lower Gwynedd  
Whitpain

Item Type  Object  Photograph  Document  Book

Collection Lower Gwynedd -

Object ID/Accession # 4087.1-82 (w/Index)

Object Name WVHS/Lower Gwynedd

Category Photographs, Documents

Date/Year Range varies

Title WVHS/Lower Gwynedd Scrapbook #1 with Photographs

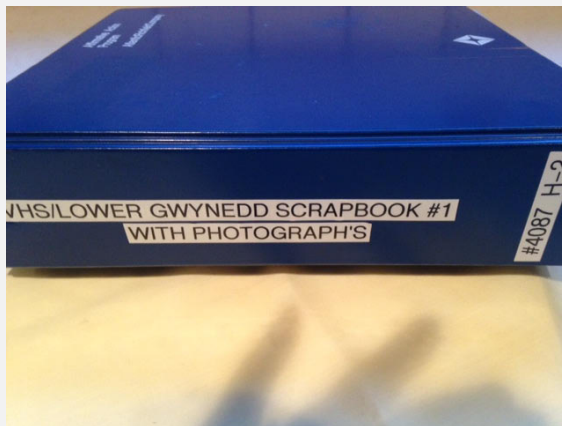
Creator/Author/Artist collected by Frank J. Russo, Jr.

Description:

See below Index. Collection of photographs (original and copies) of historic structures in Lower Gwynedd, history of Penllyn, newspaper articles, maps and old store receipts. All 82 items listed in the below index have also been scanned and are available at WVHS.

Index is as follows:

1. Photograph. Gwynedd-Mercy Academy Elementary School.
2. Photograph. Gwynedd-Mercy Academy





Wissahickon Valley

historical society

Ambler  
Lower Gwynedd  
Whitpain

Item Type  Object  Photograph  Document  Book

Collection Lower Gwynedd Twp. -

Object ID/Accession # 4088

Object Name Horse Power to

Category Photographs, Documents

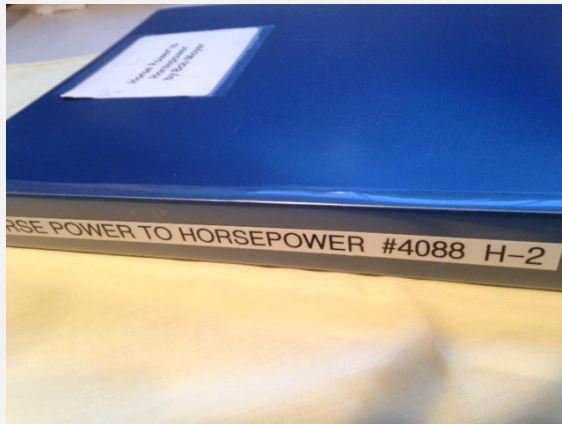
Date/Year Range 1850 - 2005

Title Horse Power to Horsepower, Remembering the J. G. Rempp & Son Blacksmith Shop

Creator/Author/Artist Bob Moyer

Description:

In the year 1876 Jacob Gottlieb Rempp opened his own blacksmith shop. The business was located in Montgomery County, PA in a small borough called Spring House. This is his story and that of his son Julius Henry Rempp. Disk with Whitpain Township maps 1871 - 1877 and this story on it in the binder.





Wissahickon Valley

*historical society*

Ambler  
Lower Gwynedd  
Whitpain

Item Type  Object  Photograph  Document  Book

Collection Library

Object ID/Accession # 4089

Object Name Penllyn History (Senior

Category Lower Gwynedd

Date/Year Range 1698 - 2013

Title Penllyn Project (Senior Project)

Creator/Author/Artist Erin Annuniciato

Description:

Senior project by Erin Annuniciato on historic structures or people in the Penllyn area.



Wissahickon Valley

*historical society*

Ambler  
Lower Gwynedd  
Whitpain

Item Type  Object  Photograph  Document  Book

Collection Lower Gwynedd

Object ID/Accession # 4090

Object Name J.E. Marsden Glass Works

Category Documents

Date/Year Range 1902 - 1933

Title Marsden Glass Work

Creator/Author/Artist collected by Frank Russo, Jr.

Description:

Collection of letters, articles and patent information regarding Marsden Glass Co.



Wissahickon Valley

*historical society*

Ambler  
Lower Gwynedd  
Whitpain

Item Type  Object  Photograph  Document  Book

Collection Library

Object ID/Accession # 4091.1-2

Object Name A. J. Murphy & Co.,

Category Lower Gwynedd

Date/Year Range 1889

Title A. J. Murphy & Co., Springhouse, PA Ledger and blank order form

Creator/Author/Artist A. J. Murphy

Description:

(1) Ledger from A. J. Murphy & Co. showing cash in and paid out for part of 1889,(2) along with a blank order form/receipt from A. J. Murphy & Co. They were dealer in Choice Flour, Fresh Bran, Cracked Corn, Oats, Middlings, Corn Meal, Linseed Meal, Fertilizers



Wissahickon Valley

*historical society*

Ambler  
Lower Gwynedd  
Whitpain

Item Type  Object  Photograph  Document  Book

Collection Library

Object ID/Accession # 4092

Object Name WVHS Historical

Category Ambler

Date/Year Range 1993

Title WVHS Scrapbook #3

Creator/Author/Artist Frank J. Russo, Jr.

Description:

Articles regarding Ambler's historic homes, businesses, clubs, Keasbey & Mattison, hospital drive, Independent School District of Ambler, Boys Club, Bicycle Club, Trolley era, Toll Gates in Ambler, Ambler's First Public School,